



PISCATORIAL PRESS

OREGON CHAPTER OF THE AMERICAN FISHERIES SOCIETY

INSIDE THIS ISSUE:

PRESIDENT'S CORNER	1
EXCOM OFFICERS & COMMITTEE	2
EXTERNAL DIRECTOR'S	3
FISHERY FEATURE	4-5
FIELD NOTES	6
EDUCATION & OUTREACH GRANT MODEL	7
NEW FRESH-WATER HABITAT COMMITTEE	7
STUDENT SCHOLARSHIP	8
EXCOM NOMINATIONS	8
OVERVIEW OF ANNUAL MEETING	9
CALL FOR ABSTRACTS	10
TECHNICAL	10
WORKSHOPS	11
VENDORS, SPONSORSHIP, AND LODGING	12
AUCTION & RAFFLE	13
REGISTRATION	13
NOMINATE TECHNICIANS & STUDENTS FOR AWARD	14
CHAPTER RESOLUTIONS	14
AWARD NOMINATIONS	15

PRESIDENT'S CORNER: FALL UPDATES

Perhaps it's fitting that I write this column on the last day of summer. Fall is when the leadership in this chapter and the parent society changes.

Chapter leadership transitioned on September 1 when Colleen Fagen moved into the President-Elect role, I became President, Rich Grost moved to Past President. We wish Neil Ward and Shaun Clements all the best in their retirements. Thanks for your years of service. At the same time we welcome in Michele Weaver as Secretary/Treasurer and Justin Huff as our new student liaison. Leadership of the parent organization changed at the Annual Meeting in Pittsburgh on September 15. Oregon's own Bob Hughes was ushered in as Second Vice President. Wayne Hubert became the new President, Bill Fisher the President-Elect, and John Boreman the first Vice President.

I made several observations at the annual meeting that I would like to share. The first is from the plenary sessions, which focused on merging science with management actions and planning. Dr. Ian Cowx of the Hull International Fisheries Institute encouraged us to ask the right questions and to do the right research so that the results of research support management actions and decisions. He pointed out how it is at times necessary to step back from a piscicentric view and make sure that we, as professionals, are supporting an integrated exchange between science and policy. This is an area where I believe ORAFS does an excellent job. At the September Executive Committee meeting we approved a legislative liaison contract to help us stay abreast of what's happening in Salem during the upcoming session. Organized through our committees, our members continue to comment on relevant scientific issues associated with management actions. Using our work as an example during the meeting in Pittsburgh, I was able to encourage others to push their chapters to take a more active role in review of the science behind tidal energy projects.

While we are helping to integrate science and policy, more can be done. We have two offseason workshops which focus on this very issue. The Salmon in the City: Merging Science and Policy symposium looks at urbanization, water quality, and restoration. A science and policy workshop

specifically targeted at the policy makers and their staff is being planned.

The other observation from the annual meeting relates to the importance of incorporating and maintaining membership involvement. Dr. Melissa Wuellner spoke about why students join and then drop out of AFS. The bottom line is that we need to do a better job of not only hooking these folks early, but supporting them throughout their educational and early career years. Dr. Wuellner's point to the older cohort was to maintain the AFS core values but also expand and adapt to challenges. We need to provide guidance and support during these periods of transition. Her message to the member students and young professionals was to ask themselves what they can do for the society. If you want to see something happen or a change be made, step up and help make it so. As Fred Harris accepted the Meritorious Service Award last week, he told the audience that the results of a cost-benefit analysis indicated that the major benefits from involvement with AFS came from the organization to him.

The work plan and budget for the 2010-2011 year are available on the ORAFS website. I encourage you to take a look at them. These are the major goals for the coming year:

- Put on the best chapter meeting in the country.
- Re-energize our Student Subunit. I would like to see someone from our subunit on the stage at the annual meeting in Seattle in 2011 to accept the Best Student Subunit Award.
- Work on integration, cooperation, and communication between other professional organizations.
- Develop a plan to support the Washington-British Columbia Chapter with the Annual Meeting in Seattle in 2011.

This is your chapter and it functions because people volunteer their time to keep it running. When Rich starts recruiting for Executive Committee positions, please consider giving some time back to the chapter. Similarly, if you have an issue you would like the Executive Committee to discuss, please let me know.

Demian Ebert, President

**2009-2010 OREGON CHAPTER AFS EXECUTIVE
COMMITTEE OFFICERS**

President: Demian Ebert
503-222-7275; daebert@pbsj.com

President-Elect: Colleen Fagan
541-962-1835; colleen.e.fagan@state.or.us

Past President: Richard Grost
541-498-2617; richard.grost@pacificcorp.com

Vice President: Shivonne Nesbit
503-947-6253; shivonne.m.nesbit@state.or.us

Secretary-Treasurer: Michele Weaver
971-673-6062; michele.h.weaver@state.or.us

External Director: Jeremiah Osborne-Gowey
541-757-0687 ext. 3; osbornegowey@hotmail.com

Internal Director: Jason Kent
503-223-5388 ext. 105; jason.kent@tetrattech.com

Student Representative: Justin Huff
503-428-2124; jmh1978@gmail.com

EXTERNAL COMMITTEE CHAIRS

Education and Outreach: Karen Hans
541-757-4186 ext. 251; Karen.M.Hans@state.or.us

Fish Culture: Ryan Couture
541-487-5510 ext. 110; ryan.b.couture@state.or.us

Freshwater Habitat: Ian Reid
541-261-2722; Fisheater67@hotmail.com

Legislative Committee: Hiram Li
541-737-1963; hiram.li@oregonstate.edu

Marine Habitat and Ecology: Scott Heppell
541-737-1086; scott.heppell@oregonstate.edu

Natural Production: Jens Lovtang
541-553-2041; jlovtang@wstribs.org

Oregon Chapter of the American Fisheries Society Mission

Improve the conservation and sustainability of Oregon fishery resources and their aquatic ecosystems for long-term public benefit by advancing science, education, and public discourse concerning fisheries and aquatic science and by promoting the development of fisheries professionals.

INTERNAL COMMITTEE CHAIRS

Awards: Mindy Simmons
503-808-4766; mindy.m.simmons@usace.army.mil

Investments: Michele Weaver
971-673-6062; michele.h.weaver@state.or.us

Scholarships: Scott Heppell
541-737-1086; scott.heppell@oregonstate.edu

Resolutions and Bylaws: Shivonne Nesbit
503-947-6253; shivonne.m.nesbit@state.or.us

AFS / TWS Liaisons:
Tony Faast, 503-231-6233; Tony_Faast@fws.gov
Patty Snow, 503-947-6089; patty.snow@state.or.us

EXTERNAL SUPPORT PERSONNEL

Legislative Liaison: Sue Marshall, Trillium Consulting
971-506-4617; suemarshall5@hotmail.com

Webmaster: Kara Anlauf
541-757-4263 ext. 240; kara.anlauf@oregonstate.edu

INTERNAL SUPPORT PERSONNEL

Historian: Don Ratliff
541-325-5338; donald.ratliff@pgn.com

Newsletter Editor: Allison (Niggemyer) Evans
541-231-5766; allison.evans@oregonstate.edu

Additional contact information (mailing addresses, fax numbers) for all officers, committee chairs, and support personnel are available at: <http://orafs.org/contacts.htm>



**Oregon Chapter of the
American Fisheries Society**

www.orafs.org

CHANGE OF ADDRESS & MEMBERSHIP APPLICATIONS:

To join or change address, go to www.fisheries.org and be sure to sign up for the Oregon Chapter. Also visit www.orafs.org to join our listserve and get other chapter information.

EXTERNAL DIRECTOR'S REPORT

I am reminded every fall how lucky I am to live in a land of plentiful bounty and incredible harvests. I trust many of you are also enjoying some of the edible delights this regions affords us. And as the harvest activities wind down with the dwindling daylight, I find myself spending a bit less time "doing" things and a bit more time "thinking" about things... things like how we can become an even more active (and effective) Chapter. One of the ways we can accomplish this is by staying abreast of natural resource-related issues as they crop up at our Capitol. And we are fortunate to have just contracted Sue Marshall (Trillium Consulting LLC) to be our new Legislative Liaison to serve as our eyes and ears in Salem. Sue was selected as the best fit for us from a review of three proposals and was also recommended by our previous liaison.

Sue Marshall is an independent government affairs consultant representing and providing technical assistance to several Oregon non-profits with an emphasis on issues of clean water, fish and wildlife conservation. With a degree in environmental health and over 30 years experience in public policy and civic engagement, Sue honed in on environmental policy issues as director of Tualatin Riverkeepers just as local jurisdictions were grappling with the federal listing of salmon and steelhead.



Sue Marshall is ORAFS's new legislative liaison! Welcome Sue!

Sue has a keen understanding of local, regional and state political processes from her experience with the Riverkeepers and as committee administrator for the Senate Committee on Environment and Natural Resources Committee and House Committee on Emergency Preparedness. Sue is a skilled facilitator and has expertise in outcome-based strategic planning, fundraising, nonprofit governance and policy analysis. Additionally, Sue has served on several policy committees over the years with the Oregon Department of Environmental Quality, Metro regional government and currently chairs Metro's Nature in Neighborhood Capital Grant Committee. She loves kayaking, is a licensed rail motor car operator, and is planning a trip on Alaska rails next year. Please join me in welcoming Sue to our organization.

To help develop and build relationships with key legislators that sit on natural resource committees, our Chapter is planning a science and policy workshop this Winter that will bringing new and emerging science understandings to the attention of legislators while addressing key science issues important to them. Sue Marshall, Stephen Kafoury (The Wildlife Society liaison), and I are working closely together on the logistics for the half-day workshop and are looking forward to a productive experience.

As we anticipated, the Chapter was recently asked to continue our participation in the ongoing marine reserve activities in our State. Specifically, the group Our Ocean requested an independent review of the proposed individual marine reserve and/or marine protected area boundaries (scenarios) coming from each of the three community teams (Cape Falcon, Cascade Head, Cape Perpetua). Many ORAFS members are already providing various levels of input during the process and were unable to provide additional feedback for an ORAFS review. And a subsequent call to our membership for help went unanswered, but we're still attempting to find a way to complete a meaningful, independent review of the proposed boundaries. If you are able to participate, please contact (Dr. Scott Heppell, scott.heppell@oregonstate.edu) ASAP.

Our new Freshwater Habitat chair, Ian Reid, is rarin' to go and we've queued up a potential review (white paper) of the latest science pertaining to the use of hatchboxes. If you're interested in helping with that effort, email Ian at fishheater67@hotmail.com.

Finally, if you're attending the ORAFS annual meeting this next February, we'd love to have you present in one of the External Committee-chaired sessions or, at the very least, swing in to catch some talks. Session topics will be relevant to the focus of each committee. And don't forget to come to the External Committee breakout sessions right after the business meeting. It's a great way to see what the Chapter is doing, meet other folks with similar interests, and ease your way into increased participation in Chapter activities. But don't let me keep you too long! After all, there's still a lot left to be harvested before those heavy frosts and Oregon rains set in. Perhaps I'll see you out there.....

Jeremiah Osborne-Gowey, External Director (541-757-0687 ext. 3; osbornegowey@hotmail.com)



Jeremiah catches some sun (& fish)!

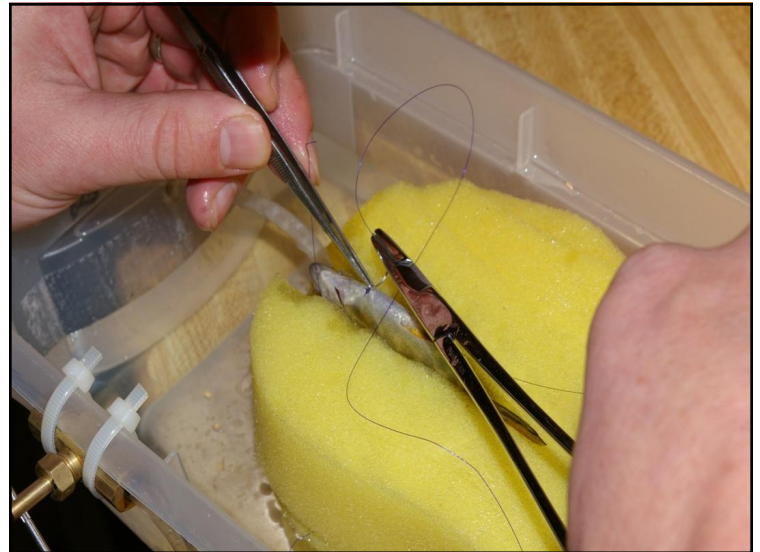
FISHERY FEATURES

IDENTIFICATION AND CHARACTERIZATION OF OVERWINTER REARING HABITAT IN CATHERINE CREEK FOR NATURALLY-PRODUCED EARLY MIGRANT JUVENILE SPRING CHINOOK SALMON

Catherine Creek, a Grande Ronde River tributary in NE Oregon, naturally-produced early migrant juvenile spring Chinook salmon redistribute downstream from upper rearing reaches to overwinter in lower rearing reaches during fall. On average, early migrants comprise 80% of this population. Early migrant survival to Lower Granite Dam (LGD), during spring, is typically lower for Catherine Creek compared to other spawning tributaries in the Grande Ronde subbasin. Catherine Creek average (migration years 2004-09) early migrant survival probability was 0.16 ± 0.07 (SD), while upper Grande Ronde, Minam and Lostine river populations had an aggregate mean probability of 0.25 ± 0.07 . Our research team was prompted to identify overwintering reaches occupied by Catherine Creek naturally-produced early migrant juvenile spring Chinook salmon due to their proportionally high abundance (within population) and comparatively low survival rates (among populations).

We have periodically attempted to identify overwinter rearing reaches used by Catherine Creek early migrant spring Chinook salmon since the early 1990s. A variety of sampling techniques (e.g., minnow traps, seines, fyke nets, snorkeling) have been employed; however, habitat and gear limitations prohibited efficient sampling. During early 2009, an opportunity to address Catherine Creek early migrant low survival cooperatively with Bureau of Reclamation (BOR) and Bonneville Power Administration (BPA), in addition to recent technological advances in radiotelemetry (e.g., tag size reductions), enabled us to develop and execute research pertaining to early migrant overwintering occupancy. Radiotelemetry techniques were selected to yield occupancy, movement and habitat use data for early migrants. Ultimately, our objective was to provide reach occupancy and microhabitat suitability indices to BOR in an attempt to assist their efforts at designing and implementing stream habitat restoration. BOR restoration is primarily intended to increase carrying capacity and overwinter survival for Catherine Creek naturally-produced early migrants.

Catherine Creek early migrant juvenile Chinook salmon were collected using a rotary screw trap during fall migration. Juveniles ($N = 98$) weighing greater than 8.5g (min-max; 89-105mm) were tagged with a surgically implanted radio transmitter (Lotek Wireless, Inc., Ontario, Canada) weighing 0.25 g from 20 October to 1 December; mean percent of body mass relative to transmitter was 2.9% (SD 0.002). Fork length (mm) and weight (0.1g) were collected for all fish tagged. Effort was made to locate each radio tagged fish once a week through March 2010, following a 7 day recovery period. Radio-tracking by foot, boat and helicopter was necessary to track 32.2-68.4 km each week. Geographic coordinates were obtained for all fish locations. Microhabitat use variables (depth (m), bottom velocity (m/s), dominant substrate, cover type, distance to cover (m) and distance to bank (m)) were measured at the exact occupied site for all located fish. Synonymous microhabitat availability data was obtained representatively from lower Catherine Creek during the overwintering period.



ODFW employee, Jeff Yanke, implants a radio tag into a 90 mm naturally-produced Catherine Creek early migrant juvenile Chinook salmon.

Of the 98 fish tagged, 15 tags were excluded from analyses due to confirmed mortality (e.g., mink and bird predation), tag expulsion or leaving the study area; 83 (85%) fish were regularly located. Weekly fish locations revealed that Catherine Creek early migrants primarily occupy a 6 km reach downstream from Union, OR for overwintering. During fall, early migrants primarily occupied high gradient reaches; during winter, distribution

increased to include low gradient reaches. Median linear range (i.e., movement) was high during late-October and early-November (i.e., fall migration), while sedentary behavior was exhibited from mid-November to early-January. Movement increased during mid-January and coincided with an unseasonal increase in water temperature. For both high gradient and low gradient reaches, early migrants' locations generally indicated moderate depths with slow currents near cover close to the bank were most suitable (i.e., optimal). High gradient fish locations were associated with coarse substrates and cover types boulder and woody debris, while low gradient fish locations were associated with fine substrates and cover type terrestrial vegetation. High and low gradient fish locations were statistically significantly different ($p < 0.05$) for microhabitat variables depth, dominant substrate and cover, while variables bottom velocity, mean column velocity, distance to cover and bank were not significantly different ($p > 0.05$). Median weekly movement was not significantly associated with size of radio-tagged fish (weight; $p = 0.6954$).



ODFW employee, Kyle Bratcher, pinpoints the exact location of an overwintering radio-tagged early migrant Chinook salmon using triangulation techniques.

We are scheduled to initiate a second year of this multiyear study during mid-September 2010; however, preliminarily it appears that Catherine Creek early migrants overwinter in a relatively small portion of stream compared to that which is available to them, and habitat restoration may be best directed toward this reach just downstream of Union, OR. However, high survival of radio tagged fish during winter may indicate that early migrant low survival to LGD occurs during spring outmigration rather than overwintering months. Thus, the highly altered and degraded (e.g., channelization, sedimentation, aberrant flows, exotics) lower 57 km of Catherine Creek that appear to function primarily as a migration corridor could be principally responsible for high early migrant mortality. Consequently, an additional study designed to determine reach specific mortality of both early and late migrants during spring emigration has been proposed to BOR and is slated to initiate during summer 2011.

We would like to thank Kyle Bratcher, Brian Alfonse, Jesse Steele, Matt Saladin, Jason Grant, Victor Cline, Ian Wilson, Denae Himes, Robbette Schmit and Jeff Yanke for their considerable data collection assistance.

Contributed by: Scott Favrot and Brian Jonasson (Early Life History Project, NE Fish Research, Oregon Department of Fish and Wildlife)

DO YOU HAVE A FISHERY FEATURE CONTRIBUTION TO SHARE?

- Have you started or finished a **unique restoration project**?
- Have you recently begun or completed an **interesting research project**?
- Would the OR AFS membership benefit from hearing about your **recent experiences** or **lessons learned**?

If you answered "Yes", then submit your story as one of our two member-driven features!

- 1) **Fishery Features**: summaries that include text and/or photos and are up to 2 pages in length.
- 2) **Field Notes**: can be as short as a photo with a caption or as long as a paragraph or two!

OR AFS members, please help the Piscatorial Press launch its new, **member-driven**, series!
If you have something to share, submit a summary, along with photos!

Submission deadlines for the next issue is **December 15, 2010**

Send submissions to Allison Evans at: allison.evans@oregonstate.edu

FIELD NOTES

CATCHING FISH IN A BARREL (AS YOU PUMP IT DRY)

What do you get when you fish-out a 26-ft-deep pool in a world-famous salmon and steelhead river? The answer was learned in June 2010 during a 4-day fish salvage by twenty folks from PacifiCorp Energy, ODFW, USFS, and Weekly Bros. Construction. The plunge pool at the base of Soda Springs Dam was pumped dry to allow for construction of a new fish passage & monitoring facility.

The first two days were dedicated to capturing fish from the tailout and riffle while flow from the dam gradually ceased, access was built into the river channel, and a 5,000 gpm diesel pump was installed near the pool. The day three goal was to remove all adult spring chinook and steelhead, of which we could see at least 30 holding in the now-calm pool. The effort began early with a few fish captured by angling, then the pump fired up and we collected juvenile and benthic fishes along the edges while plucking out occasional salmon from the gradually shrinking pool by tangle net. The pace quickened until by dusk the residual pool was wadeable and fish could be directly dipnetted, transferred to coolers, and



North Umpqua River viewed from Soda Springs dam prior to dewatering on day 1 (6-21-10 0800). Photo:R Grost



Chris Sheely and Andrew Janos (both ODFW) tangle netting for adult salmon and steelhead. In the distance, a crew is ready with coolers to haul fish over the dry channel to flowing water beyond bridge, and excavator is forwarding pump as water level drops in pool. Photo: R. Grost



Residual pool near end of day three, fish salvage and pumping in progress as excavator pioneers access for pump (note fish screen on pump intake). Photo: P. Sighting

manually hauled to liberation 200 yards away. By the fourth morning the residual pool had cleared and we resumed pumping while netting another 800 or so trout, salmon fry, sculpin, and the only adult lamprey encountered.

So what did we get? The totals included more than 1,600 brown and rainbow trout (including juvenile steelhead, and about 600 alevins and fry), 54 adult Chinook salmon (mostly unmarked), 5 adult steelhead (all unmarked, 3 winter and 2 summer run), 55 chinook fry, 6 coho fry, 13 lamprey juveniles and 1 adult, and 165 sculpins. All salvaged fish were liberated into the North Umpqua River immediately downstream of the dewatered area, except that the 2 summer steelhead captured were tagged and released upstream of Soda Springs dam as part of a fish movement study by Sierra Lewis (USFS/OSU).

Submitted by Rich Grost, PacifiCorp Energy

OR AFS EDUCATION AND OUTREACH GRANT PRODUCES “MODEL” RESULTS!

At the Clackamas River Basin Council, we knew just what we'd do with Education and Outreach funding from the Oregon Chapter of the American Fisheries Society: bring our watershed to life! The focus of our proposal for a 2009 Education & Outreach grant was to create a three-dimensional version of the Clackamas watershed. This watershed model will display not only the natural features of our watershed, but also fish runs, hatcheries, water treatment plants, reservoirs, and large dams. The watershed concept can be difficult to describe with words alone – using a model to show water flowing from upland headwater streams down to higher-order streams easily demonstrates this information! There is also the added fun factor of model users figuring out where their homes are in the watershed, connecting people to place. We will use the model to demonstrate how everyone can impact those living downstream by simulating “pollution” in the form of colored drink powders sprayed with water.

To construct the model, we consulted detailed maps, then worked to cut each individual topographic layer out of foam core, and stacked layers on top of each other to create lifelike hills and valleys. We're currently in the process of coating those layers with plaster. After applying two coats, we'll paint and waterproof the model, and then add fun details like boats, cars, wildlife, and



AmeriCorps interns Greg Bengé (left) and Greer Ramsey (right) trace an outline of the Clackamas River watershed onto the bottom topographic layer of the watershed model.

people. For more information about the model, please contact Becki Walker, Education & Outreach Coordinator of the Clackamas River Basin Council at rebecca@clackamasriver.org or (503) 558-0550.

Submitted by Becki Walker, Clackamas River Basin Council

IAN REID PROVIDES FRESH LEADERSHIP FOR FRESHWATER HABITAT COMMITTEE



Ian Reid is the new Freshwater Habitat Committee Chair.

Ian Reid will be serving as the new Freshwater Habitat Committee Chair. Ian is a district fish biologist/program manager with the U.S. Forest Service and an AFS Certified Fisheries Professional. Formerly, he served Oregon AFS as Secretary-Treasurer and Vice President. He has two undergraduate degrees, including Fisheries Science from Oregon State University, and a masters from Southern Oregon University. Freshwater habitat is his passion (aside from family, hunting, and fishing) and he has spent over a decade formally monitoring and restoring it. Ian lives in Talent, OR with his wife, two young daughters and birdy black lab. He is excited to return to Oregon AFS and work on projects that could influence Oregon's freshwater habitat. Thank you, Ian, for your continued service to you chapter!

AFS STUDENT SCHOLARSHIPS:

What scholarships are available? Five scholarships are available:

- Associate degree student (\$2,000)
- Bachelors degree student (\$2,000)
- Master's degree student (\$2,000)
- Doctoral degree student (\$2,000)
- Carl Bond Memorial Scholarship (\$5,000) for an exceptional graduate student to support special research efforts benefitting native Oregon fishes.



Each award includes an award certificate, recognition at the 2010 Annual Meeting and in Fisheries and the Piscatorial Press.

What is the goal of the scholarship program? The goal of these scholarships is to reward and promote the education and development of future fisheries professionals.

How do I become a Student Member of AFS? Go to www.fisheries.org and apply online, and be sure to check the Oregon Chapter box (\$22 total cost for 1 year).

Where do I go for complete application instructions? www.orafs.org/scholarships_awards.html

When are applications due: January 7, 2011

Who should I contact with questions? Scott Heppell at Scott.Heppell@oregonstate.edu or 541-737-1086

ARE YOU READY TO BE COMMITTED? NOMINATIONS OPEN FOR THE 2011-2012 EXCOM

Oregon is among the most prestigious chapters of the American Fisheries Society, and serving on the Oregon Chapter Executive Committee is an opportunity to both ensure & share in this prestige. It's a great resume booster & network enhancer...besides being a satisfying short-term commitment to the profession and your peers.

Officer terms are 1-year (except President-elect which is 3 years) but officers often have *so much fun* they run for a repeat term. Some positions tend to take less time spread fairly evenly (e.g. Vice President, External Director), and others have bursts of action, mostly centered around the annual meeting. Experienced officers will help you learn the well-worn ropes while welcoming your insights and energy.

The positions and general descriptions are:

- President-elect (1 year *each* as President-Elect (chair annual meeting program committee), President (manage ExCom), and Past-president (nominations, trade show, newsletter, etc.))
- Vice-president (resolutions and bylaws, student coordination, raffle-auction, etc.)
- Secretary-Treasurer (finances, registration systems, meeting minutes, etc.)

- Internal Director (manage internal committees and meeting logistics, etc.)
- External Director (manage external committees and issues, etc.)

Elections will be held during the Business Meeting at the Annual Meeting, and all terms officially begin September 1 of that year (note: President-elect will need to begin Annual Meeting planning by June.) Communication is mostly by email, with 1-2 brief conference calls / month and in-person planning retreats in Fall and Spring. Travel for chapter business can be reimbursed. Candidates will be introduced to the membership in the Winter Piscatorial Press via a short statement describing their background, education and work, experience relevant to the position sought, and anticipated contribution to the Chapter.

If you are interested in an ExCom position, or know someone who may be, just let me know via an email or phone call and provide the contact info and position of interest. Operators are standing by to take your call! Nominations and statements are due by **December 15, 2010** to: Rich Grost, Rich.Grost@PacifiCorp.com, 541-498-2617. For more information on positions and duties, see: www.orafs.org/about.

2011 OREGON CHAPTER ANNUAL MEETING: OVERVIEW & EVENTS AT A GLANCE

JOIN US FOR MANAGING THROUGH SCIENCE IN BEND, FEB. 22-25, 2011

Feb 22 Tuesday	Feb 23 Wednesday	Feb 24 Thursday	Feb 25 Friday
<ul style="list-style-type: none"> • Workshops (pg 11) 	<ul style="list-style-type: none"> • Workshops (pg 11) • Plenary Session (below) • Technical Sessions (pg 10) • Poster Session & Trade Show Social (below & pg 10) • Student Mentor Mixer (below) 	<ul style="list-style-type: none"> • Technical Sessions (pg 10) • Awards Luncheon (below & pg 13) • Business Meeting • ODFW/OSU Sponsored Mixer (below) • Banquet (below) • Raffle & Auction 	<ul style="list-style-type: none"> • Technical Sessions (pg 10)

THEME :

Our 2011 Annual Meeting will focus on **managing through science not emotion**. The meeting will include a wide variety of opportunities for sharing technical expertise, ideas, results of cutting edge research, and of course our trademark abundant networking opportunities. It will include a plenary speaker with 55 years of fisheries experience, relevant technical sessions, poster displays, educational workshops, trade show vendors, a student-mentor mixer, and several social events. We will provide these events and services at the lowest possible cost, to maximize participation despite the economic challenges we are all facing.

GET INVOLVED!

Your suggestions and assistance are welcome and encouraged. Please contact Program Chair Colleen Fagan (colleen.e.fagan@state.or.us or 541-962-1835) for more information.

PLENARY SESSION (FEB 23):

Our plenary session will be Wednesday afternoon and include a speaker of regional renown, Don Chapman. Don Chapman's fisheries career covered 55 years, most of it spent on salmon and steelhead. Don received a PhD from Oregon State University and taught at the University of Idaho, Oregon State University, and other universities. He has taught many of the salmon managers working in the Northwest. Don has worked throughout the Pacific Northwest, extensively on Columbia and Snake River issues. His plenary presentation will focus on Columbia and Snake River salmon and steelhead issues.

POSTER SESSION AND TRADE SHOW SOCIAL (FEB 23):

Visit local and nationally-recognized vendors of fishery equipment and services face-to-face during the poster session. The trade show will be accompanied by a social to facilitate interaction. To reserve a 8x10 space contact **Rich Grost**. Vendors: see information on page 12 to register for space!! Poster session details available on page 10.

STUDENT MENTOR MIXER (FEB 23):

The 'speed-dating' format will be continued to allow more interaction and networking among students & professionals.

AWARDS LUNCHEON (FEB 24):

Network over **free lunch**, while recognizing the award-winning work of our colleagues. Members: see instructions on page 14 to nominate a colleague for an award!

ODFW/OSU SPONSORED MIXER (FEB 24):

ODFW and OSU are sponsoring a mixer for all meeting attendees from 5:00-6:00 PM.

RAFFLE AND AUCTION (FEB 24):

Score some great deals on equipment, artwork, and adventures while supporting the chapter. Donations gratefully accepted.

ENTERTAINMENT:

Local Bend music talent will provide plenty of dancing and entertainment opportunity following the banquet.

Talented members are encouraged to bring their instruments for acoustic jamming following the poster session

STUDENT OPPORTUNITIES

Participation of college students from throughout Oregon is encouraged. There will be ample opportunities for students to present papers, display posters, compete for awards, meet mentors, and network with other students and professionals. Students can also defray costs by volunteering assistance to the ORAFS in trade for free lodging. Visit www.orafs.org for information about volunteering in exchange for lodging.

REGISTRATION

Early registration fees for AFS members / non-members are \$135 / 185, (\$100 / 125 for retirees). Early registration for students is only \$25. Early registration saves \$25-50 thru 1/21/11. Banquet meals are priced at \$35, same as last year. Register at: www.orafs.org.

2011 OREGON CHAPTER ANNUAL MEETING: CALL FOR ABSTRACTS

SUBMIT ABSTRACTS AT: WWW.ORAFS.ORG

DEADLINE: DECEMBER 10, 2010

CONTRIBUTED ORAL AND POSTER ABSTRACTS

Instructions for all Presentation and Poster Abstracts

The Program Committee for the ORAFS Annual Meeting invites abstracts for contributed oral presentations and posters. The meeting will include a poster session to encourage discussion between poster authors and attendees. Abstracts for ALL presentations and posters must be submitted by using the online abstract form, which is available on the ORAFS website (www.orafs.org). Although the form specifies some categories and does the formatting for you, there are a few things to do BEFORE you log onto the form:

- 1) Develop a brief but descriptive title, avoiding acronyms or scientific names in the title unless the common name is not widely known.
- 2) List all authors, their affiliations, addresses, telephone numbers, and e-mail addresses.
- 3) Type a succinct abstract of <300 words that summarizes your objectives, methods, and findings. This can be cut and pasted into the abstract box of the form to reduce your online time and help avoid system crashes.

All presenters will receive an e-mail confirmation of their abstract submission and will be notified of acceptance by December 31, 2010. Designated time and place of presentations will be made available by January 14, 2011.

Poster Session and Trade Show Details: The Poster Session and Trade Show Social will be held Wednesday night, February 23, 2011. The ORAFS Annual Meeting will provide space for up to 32 posters. Posters, not to exceed **4 ft x 4 ft**, can be set-up from 5:30 p.m.-7:30 p.m. on Wednesday, February 23, 2011, and must be removed no later than 10:30 a.m. on Friday, February 25, 2011. Poster display boards will be provided; however, authors will be required to **provide their own means of poster attachment (i.e., Velcro or push-pins)**. When preparing your poster, please consider items such as font size, font color, graphics, etc., that will enable people to view your poster clearly from 3-6 ft away.

Questions? Contact: Colleen Fagan at 541-962-1835 or Colleen.e.fagan@state.or.us

2011 OREGON CHAPTER ANNUAL MEETING: TECHNICAL SESSIONS (FEB 23-25)

Presentation and poster sessions will address fisheries topics throughout Oregon and the Pacific. Please consider organizing a session around your area of expertise, soliciting presenters, and submitting abstracts as a package. All sessions will be considered based on relevance, uniqueness, success of the organizer in populating the session with presentations, and available space. Potential session topics so far include:

- Advances in Technology
- Anadromous Fish: Sturgeon, Steelhead, and Salmon
- Aquatic Invasive Species
- Clackamas River Bull Trout Reintroduction
- Coastal / Estuarine Fisheries
- Education and Outreach
- Enforcement Challenges and Issues
- Fish Culture and Health
- Fish Passage and Reintroduction
- Fish Taxonomy and Genetics
- Habitat Restoration
- Implementation of the Columbia Basin Fish Accords
- The Influence of Springs on Fish Habitat (ted.g.wise@state.or.us)
- Klamath River Dam Removal
- Lamprey and other Non-game Fishes: Status and Biology
- Marine Mammal Predation and Management
- Marine Reserves and Fisheries (scott.heppell@oregonstate.edu)
- Non-Native Fishes
- Recovery Planning and Implementation
- Renewable Energy
- Science and Policy
- Supplementation Successes and Failures
- Wet-n-Wild

Do you have an idea for another session? Contact Colleen Fagan (541-962-1835 or Colleen.e.fagan@state.or.us) with *your* session ideas!

2011 OREGON CHAPTER ANNUAL MEETING: WORKSHOP POSSIBILITIES!

Instream Flow and Fish Habitat: A Condensed Workshop for Today's Busy Fish-Head

Feb 22, 1:00 – 5:00 pm and Feb 23, 8:00 – 11:30 am, The Riverhouse, Bend and nearby field location; cost \$125/\$175*, students \$25 prior to January 21, 2011
Instructor: Tim Hardin (Tim.S.Hardin@state.or.us)

Chances are, the fishes you deal with in your profession live in water. If that water is moving, then this course may be for you! Instream flow issues loom large in hydropower projects, diversions for agricultural or municipal uses, aquifer storage and recovery, Biological Opinions, and just about anytime humans interact with running waters. Here is your chance to learn enough to be dangerous in one very short workshop.

This class will cover:

- Hydrological statistics: learn to throw around terms like “flow exceedance curve”, “time series analysis”, and, possibly, “Markov chain.”
- Hydraulics: demystify the basic terms that go into the fanciest models.
- Instream flow methods: Learn the basics, from Tennant to Tessman to Toe-width, from IHA to PHABSIM to River2D. Learn the basics of data interpretation and project scoping too, all in a few short hours. Impossible? No, it can be done, depending, of course, on how “the basics” are defined.

The class will use a combination of presentations, exercises, group discussions, and caffeine to drive the points home, and, in some cases, into the ground. At press time, the possibilities of guest speakers and/or a field exercise were still being negotiated.

Other potential workshops include

- **Developing Effective Presentations**
 - **Fish Screening**

More information on all workshops will be included on the Oregon AFS website and within the winter issue of the Piscatorial Press. Additional recommendations and volunteers to organize a workshop are welcome.

Contact Colleen Fagan at 541-962-1835 or Colleen.e.fagan@state.or.us with additional ideas.

Fishery Photography

Feb 22, 1:00 – 5:00 pm and Feb 23, 8:00 – 11:30 am, The Riverhouse, Bend; cost \$125/175* (students \$25 prior to January 21, 2011)

Convener: Rich Grost (Richard.Grost@PacifiCorp.com) and Jeremy Monroe (Jeremy@freshwatersillustrated.org)

Underwater photography and videography is increasingly important for documenting fish and habitat characteristics, educating and compelling the public to use and respect the resource, and justifying project funding. In recent years, a new generation of over-the-counter underwater digital camera equipment has evolved, which offers new opportunities for meeting the age-old challenges of making good images in the field, and makes underwater photography a viable method for virtually every biologist who can fall into a stream.

This workshop will cover:

- Selection of equipment (new point-n-shoot cameras, hand-held and remote video cameras, accessories)
- Set-up and use of most equipment (e.g. how to control flash and macro functions)
- Professional tips for improving all of your photography
- Field methods for special types of images (underwater, macro, flash, etc.)

It will also include group critique of an image, approach, or challenge from each participant, and plenty of interactive Q & A. This is a hands-on workshop so bring your camera if you wish, and your experiences and image(s) to share. At the conclusion, you'll have valuable insights on how to stretch your limited photography budget, and how to make the most of your time and opportunities in the field and underwater. Why spend years and thousands of \$ making your own mistakes when you can learn from ours instead - at a bargain price?

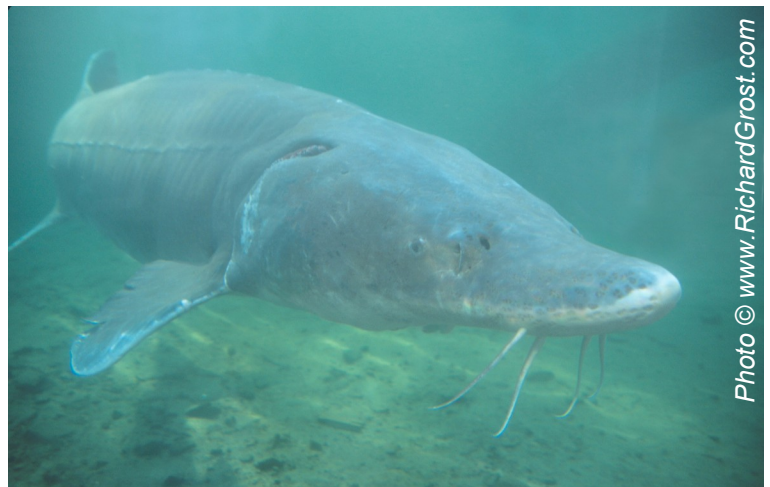


Photo © www.RichardGrost.com

2011 OREGON CHAPTER ANNUAL MEETING: VENDORS: RESERVE NOW TO EXHIBIT AT THE 2011 ANNUAL MEETING IN BEND!

The 2011 Annual Meeting will feature ample space for vendor exhibits, each about 8x10 ft, arranged within the Exhibit Hall of the Conference Center, where all coffee breaks will be served. This room will also host the Poster Session and Trade Show Social Wednesday night, and the Awards Lunch and Business Meeting Thursday. You'll have excellent exposure to our 400+ audience, as well as drive-up access to the ground-floor room and opportunity to access the Deschutes River flowing only 150 ft away for product field demonstrations. Locations will be selected on a 1st-come basis at the meeting. Cost for the display space, table, 2 chairs and wastebasket is \$400 for members and \$500 for non-members. People manning the exhibit must also register for the meeting/meals using standard options.

To reserve your space, register for the meeting at: www.orafs.org and select the "Vendor Exhibit" option on the form. Questions? Contact: Rich Grost Rich.Grost@PacifiCorp.com, 541-498-2617.

SEEKING SPONSORS FOR THE ANNUAL MEETING

Sponsorships from agencies, industries, tribal and other entities constitute a large and important part of the Chapter's support. Contributions of in-kind services (e.g. printing services) and direct funding help to defray meeting costs, thus allowing low registration fees to ensure maximum participation by fishery professionals. They also help support our student programs such as: 4-5 annual scholarships, student-mentor social event, and student registration discounts and complimentary lodging.

Sponsorships generally range from \$500 to \$5,000 each, and are recognized in print within our meeting program, on posters at the meeting registration desk, and on our website. Please consider arranging a sponsorship from your organization, or naming the ORAFS as a recipient in your non-profit community giving campaigns or matching donation programs.

The Oregon Chapter of the American Fisheries Society annual meeting is the premier venue for sharing and communicating fisheries science and management information among professionals in Oregon, and beyond. Our annual meeting typically hosts more than 500 professionals and offers more than 150 technical presentations, plus many networking and mentoring opportunities. Registration fees are kept low to facilitate participation among students, technicians, and scientists from all employment levels.

To be recognized in print, sponsorships must be received by

January 21, 2011

To become a Sponsor of the 2011 Annual Meeting, please contact:

Demian Ebert, President, ORAFS

WHERE TO STAY? LODGING DETAILS FOR THE ANNUAL MEETING



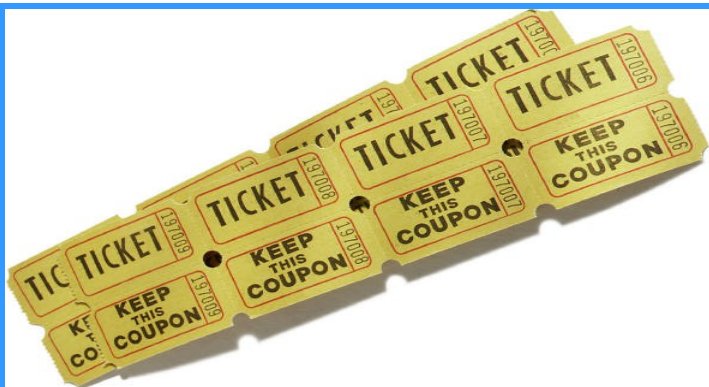
3075 N. Business 97, Bend, OR 97701

ORAFS has reserved a block of rooms at the Riverhouse with a special rate within government per diem limits. **The block of rooms & special rate are available now, and will be held through January 21, 2011, or until sold out.** After this date, any remaining rooms will be opened to the general public, and Riverhouse cannot guarantee that the special rate can be granted.

To reserve a room at the Riverhouse, call the reservations line at (800) 547-3928 or the direct number at (541) 389-3111. **Rooms at the AFS rate cannot be booked online at this time.** Reference the group block for the Oregon Chapter AFS. There are multiple room types available within the AFS block. The Riverhouse cancellation policy is that any reservation cancelled within 14 days of arrival will be assessed a fee equal to one night hotel room plus taxes.

The Riverhouse is located on the north end of Bend, on North Business 97. Their website is <http://www.riverhouse.com/>

If the room block at the Riverhouse is sold out, the overflow hotel is the Shilo Inn. It is located next door to the Riverhouse & should be able to accommodate government per diem rates if you call their front desk (phone #: (541) 389-9600) and reference the AFS meeting.



HELP MAKE THE ANNUAL MEETING'S RAFFLE AND AUCTION A HUGE SUCCESS!

SEEKING RAFFLE AND AUCTION CHAIRS!

WOULD YOU LIKE TO GET MORE INVOLVED WITH THE OR CHAPTER?

The ORAFS counts on volunteers to make the raffle and auction a fun and prosperous event. Consider getting more involved with the OR Chapter by co-chairing the raffle and auction.

If you are interested, please contact:
Shivonne Nesbit, Shivonne@nesbit.net or 503-947-6253

SEEKING RAFFLE AND AUCTION DONATIONS!

SHOW OFF AND SHARE YOUR PRODUCTS, SERVICES, EXPERIENCE, ART AND OTHER SKILLS

The ORAFS counts on donations to, and proceeds from, the Raffle and Auction to help fund our scholarship programs and keep meeting fees low. For donors, it's a great way to advertise products and services to our large but targeted audience. Plus, it's a fun part of the Banquet. Some of the most popular items in past years have been fish art, prints, handmade items, guided fishing trips, outdoor gear, professional fisheries gear, books, and fine beverages. Please consider donating, or contacting your favorite local vendors to gather donations.

To Donate or Assist, Contact:
Shivonne Nesbit, Shivonne@nesbit.net or 503-947-6253

2011 OREGON CHAPTER ANNUAL MEETING: REGISTER TODAY!!!

WE WANT YOU TO REGISTER FOR THE ANNUAL MEETING TODAY!

Early registration for the 2011 ORAFS Annual Meeting will be available online at www.orafs.org in late October. We will be using 123signup again this year. Please visit our website, www.orafs.org for the latest information and to access the registration form.

If, after checking the website, you have any 2011 Annual Meeting registration questions, please contact Michele Weaver at michele.h.weaver@state.or.us, 971-673-6062.



HATCHERY MANAGERS & INSTRUCTORS: NOMINATE A DESERVING HATCHERY TECHNICIAN OR AQUACULTURE STUDENT TODAY!!

ORAFS AWARDS AVAILABLE TO TRAVEL TO FISH CULTURE
CONFERENCE

Deadline for Nomination: November 12, 2010: 5pm (PT)

The Oregon Chapter of the American Fisheries Society is encouraging **hatchery managers** and **instructors** to **nominate hatchery technicians and students in an aquaculture program** for a "scholarship" to attend the 2010 Northwest Fish Culture Conference Dec 7-9 in Portland, Oregon (<http://www.nwr.noaa.gov/NW-Fish-Culture/>).

There are two \$500 scholarships available -- one for a non-student hatchery technician, and one for a student in an aquaculture-related program. They can be used for any costs related to the conference (registration, travel, lodging, etc.). Nominations should include:

- the name and contact information of the nominee and nominator,
- AFS membership number of nominee (if a member),
- brief description of the nominee's recent school and/or work experience,
- expected career benefits from attending the NWFFC.

Nominations will be evaluated by the ORAFS Aquaculture Committee and ExCom. Priority will be given to AFS members, and non-members will be encouraged to use a portion of the scholarship to join AFS.

Questions, comments, and nominations must be sent to: Shaun.Clements@oregonstate.edu and Ryan.b.Couture@state.or.us

Recipients will be notified via email by Nov 19.

Winners are encouraged to submit a summary of their trip to the Piscatorial Press, and also attend our OR Chapter AFS Annual Meeting Feb. 23-25, 2011 in Bend, OR, where we will have a session highlighting aquaculture advances.



Is there a resource issue that needs Chapter attention? **If you wish to bring an issue to the membership, please submit your resolutions to the Resolutions and Bylaws Committee by Friday, December 10, 2010.**

The committee can help you craft a Resolution for Ex-Com review, and potentially the consideration of the Chapter via publication in the *Piscatorial Press*, posting to the Chapter website, and submission to the Chapter membership for a vote in Bend in 2011.

Adopted Chapter resolutions can be found on the website at: <http://www.orafs.org/communications>.

For more information about submitting resolutions, please contact: Shivonne Nesbit, ORAFS Vice President and Resolutions Chair, Shivonne@nesbit.net, 541-805-5320

FIRST CALL FOR AWARD NOMINATIONS

NOMINATE A DESERVING COLLEAGUE TODAY!



It is fall and you are knee-deep in ice-water. As your mind goes numb, your thoughts wander to last February's ORAFS Annual Meeting and the people you wish you had nominated for an award. It's not too late — you can now nominate them for THIS COMMING YEAR!

You know who these people are...the peer, the mentor, the teacher, the partner from another agency, the private landowner who worked so hard to do that great habitat work...the one who made your whole project come together...or who inspired you to go back to graduate school. Now is a great time to start putting your thoughts on paper so you will have plenty of time to refine your 2011 nomination before **January 7, 2011**.

For all awards except Broken Oar, you should indicate how the nominee's efforts are above and beyond their regular job. All awards are discretionary, none are required to be given each year. All awards are limited to one recipient per year, except for Awards of Merit where multiple recipients may be rewarded within a year.

Fishery Worker of the Year

This is the Chapter's most prestigious individual award. Nominees **must be AFS members in good standing** who are responsible for substantial single or sustained accomplishments above and beyond their regular job, often spanning many years. Nominations should indicate how efforts are related to the goals of guiding and influencing sound resource practices.

Fishery Team of the Year

This award recognizes outstanding teams that merit acknowledgement for excellent work beyond an Award of Merit. The stringent award criteria are similar to the Fishery Worker of the Year, but for team efforts. This award recognizes the collaborative efforts to understand and manage fisheries resources, and that these efforts frequently cross geographic, disciplinary and socioeconomic boundaries. At least one nominee of the

team must be an **AFS member** in good standing. The team or group must have been responsible for substantial single or sustained accomplishments. Each member of the team nominated must have produced a substantial portion of the work. Nominations should indicate how they are related to the goals of guiding or influencing sound resource practices. To demonstrate equivalent contributions, describe substantive contributions of each member of the team.

Award of Merit

This award recognizes **individuals, groups, or organizations** that have made special contributions, above and beyond normal job requirements, to fisheries science or the American Fisheries Society over one or more years. Successful nominees display evidence of creativity, cooperation and results. Nominees do **not need to be AFS members**.

Bill Wingfield Memorial Award in Fish Culture

Nominees should be **individuals or groups** that have contributed significantly to advancing fish culture (including fish health) in Oregon. **AFS members or non-members** may be nominated.

Broken Oar Award

Everyone's favorite award, and just for fun, the Broken Oar Award is presented for "outstanding display of field technique and coordination." No doubt you already have some nominees in mind from this year's field season! **AFS members or non-members** may be nominated.

Full description of awards criteria and suggestions about how to write nominations will be posted to the Oregon AFS Chapter website www.orafs.org, or can be obtained by contacting the Awards Chair, **Mindy Simmons**, at **503-808-4766**, or mindy.m.simmons@usace.army.mil

DEADLINE FOR NOMINATIONS IS: January 7, 2011

DO YOU HAVE A NEWS ITEM YOU WANT TO SHARE IN THE DECEMBER ISSUE OF THE PISCATORIAL PRESS?

If so, the submission deadline for the next issue is **December 15, 2010**. Send submissions to Allison Evans at: allison.evans@oregonstate.edu