



PISCATORIAL PRESS

OREGON CHAPTER OF THE AMERICAN FISHERIES SOCIETY

INSIDE THIS ISSUE:

PRESIDENT'S CORNER	1
EXCOM OFFICERS & COMMITTEE	2
EXTERNAL DIRECTOR'S REPORT	3
SALMON IN THE CITY SUMMARY	4-
ORAFS AT OWEB	5
BERKELY FELLOWSHIP	5
CANDIDATES FOR EXCOM	6-9
PRINTABLE MEETING FLYER	10
OVERVIEW OF ANNUAL MEETING	11
PLENARY SPEAKER DR. DON CHAPMAN	12
WORKSHOPS	13
REGISTRATION	14
SPONSORSHIP	14
LODGING	14
SCHEDULE-AT-A-GLANCE	15
TECHNICAL SESSION SCHEDULE	16
TRADE SHOW	17
FIELD TRIP	17
AUCTION & RAFFLE	18
STUDENTS	18
AWARD NOMINATIONS	19

PRESIDENT'S CORNER: HEAT-UP PARTICIPATION IN ORAFS THIS WINTER

December 15, 2010 – Yreka, CA. Today's President's Corner is coming to you from a hotel room that we have converted into a conference room in Yreka. I am here for the week facilitating an expert panel tasked with evaluating the effects of dam removal in the Klamath River on coho and steelhead. It is fascinating, but exhausting at the same time.

I am going to start this off with a plea for participation. The number of abstracts submitted for our annual meeting is well below normal. I realize that people have limited travel funds and have to make choices between our chapter meeting in Bend in February and the Annual Meeting in Seattle in September. If there is ANY WAY you can find the support to attend the Oregon Chapter Annual Meeting you will not be disappointed. The Annual Meeting Planning committee has put together the framework of what will be another excellent annual meeting. As usual there will be excellent technical presentations, an exciting plenary presentation, an excellent trade show, and several socials. This year we have hired a local band to provide music after the banquet. We need only one thing to make this an excellent meeting: *Your Attendance*. Please plan on joining us even if you are not presenting a paper or poster or even moderating a session. For those who would like to attend but are facing severe financial restrictions, we've created a Fish out of Water Waiver (details on the registration portion of the annual meeting web page: go to <http://orafs.org/meeting2011/Annual11.htm>, click on "Meeting Registration", and scroll down).

It seems that just a few weeks ago I sat down and wrote a column for the Fall Piscatorial Press. The last three months have been a busy period of time for the Oregon Chapter. We successfully convened an all day symposium in Portland dealing with Salmon in

the City that was attended by close to 100 people (see page 4). The Executive Committee retreat was held at the Riverhouse in Bend (the site of the upcoming annual meeting) in early October. We formally hired a legislative liaison, Sue Marshall, to be our eyes and ears in the capital. I represented the chapter at the Western Division Executive Committee retreat in Grand Junction, CO. Meanwhile, Colleen has been busy putting the details together for the Annual Chapter meeting in February (see pages 10-19). Just today the Chapter formalized a letter supporting the National Fish Habitat Conservation Act. Perhaps by the time you read this the bill will have been passed.

An interesting element from the Western Division Executive Committee meeting was that all the chapters seem to have similar issues recruiting and retaining membership. Oregon is no different. As of September, we had 399 members while there were over 900 members of AFS living in Oregon. Somewhere out there are close to 600 people who are not a member of our chapter. This is the time of year when we all renew our memberships and should have already received your annual renewal package. If you are already an Oregon Chapter member: Thank You! If you're not a member, when you renew, please flip the form over and check the box on the back to become a formal member of the Oregon Chapter. Chapter membership only costs \$2. Also, if you are interested in becoming more involved in the Chapter, we are recruiting for committee and chapter officer positions.

Thank you for your support.

Demian Ebert, President

**2009-2010 OREGON CHAPTER AFS EXECUTIVE
COMMITTEE OFFICERS**

President: Demian Ebert
503-222-7275; President@orafs.org

President-Elect: Colleen Fagan
541-962-1835; PresidentElect@orafs.org

Past President: Richard Grost
541-498-2617; PastPresident@orafs.org

Vice President: Shivonne Nesbit
503-947-6253; VicePresident@orafs.org

Secretary-Treasurer: Michele Weaver
971-673-6062; SecTreasurer@orafs.org

External Director: Jeremiah Osborne-Gowey
541-757-0687 ext. 3; ExternalDirector@orafs.org

Internal Director: Jason Kent
503-223-5388 ext. 105; InternalDirector@orafs.org

Student Representative: Justin Huff
503-428-2124; StudentRep@orafs.org

EXTERNAL COMMITTEE CHAIRS

Education and Outreach: Karen Hans
541-757-4186 ext. 251; Karen.M.Hans@state.or.us

Fish Culture: Ryan Couture
541-487-5510 ext. 110; ryan.b.couture@state.or.us

Freshwater Habitat: Ian Reid
541-261-2722; Fisheater67@hotmail.com

Legislative Committee: Hiram Li
541-737-1963; hiram.li@oregonstate.edu

Marine Habitat and Ecology: Scott Heppell
541-737-1086; scott.heppell@oregonstate.edu

Natural Production: Jens Lovtang
541-553-2041; jlovtang@wstribs.org

Oregon Chapter of the American Fisheries Society Mission

Improve the conservation and sustainability of Oregon fishery resources and their aquatic ecosystems for long-term public benefit by advancing science, education, and public discourse concerning fisheries and aquatic science and by promoting the development of fisheries professionals.

INTERNAL COMMITTEE CHAIRS

Awards: Mindy Simmons
503-808-4766; mindy.m.simmons@usace.army.mil

Investments: Michele Weaver
971-673-6062; michele.h.weaver@state.or.us

Scholarships: Scott Heppell
541-737-1086; scott.heppell@oregonstate.edu

Resolutions and Bylaws: Shivonne Nesbit
503-947-6253; shivonne.m.nesbit@state.or.us

AFS / TWS Liaisons:
Tony Faast, 503-231-6233; Tony_Faast@fws.gov
Patty Snow, 503-947-6089; patty.snow@state.or.us

EXTERNAL SUPPORT PERSONNEL

Legislative Liaison: Sue Marshall, Trillium Consulting
971-506-4617; suemarshall5@hotmail.com

Webmaster: Kara Anlauf
541-757-4263 ext. 240; kara.anlauf@oregonstate.edu

INTERNAL SUPPORT PERSONNEL

Historian: Don Ratliff
541-325-5338; donald.ratliff@pgn.com

Newsletter Editor: Allison Evans
541-231-5766; allison.evans@oregonstate.edu

Additional contact information (mailing addresses, fax numbers) for all officers, committee chairs, and support personnel are available at: <http://orafs.org/contacts.htm>



**Oregon Chapter of the
American Fisheries Society**

www.orafs.org

CHANGE OF ADDRESS & MEMBERSHIP APPLICATIONS:

To join or change address, go to www.fisheries.org and be sure to sign up for the Oregon Chapter. Also visit www.orafs.org to join our listserve and get other chapter information.

EXTERNAL DIRECTOR'S REPORT

Warm winter greetings on a beautifully chilly day!

You may recall that back in 2009, our Chapter dispersed a letter of support for the National Fish Habitat Conservation Act (NFHCA) to Oregon's Congressional Delegation. While it didn't have the support it needed at that time, over the next year it gained dozens more key supporters and had momentum going for it, but was never brought to the floor for a vote. Then, late last year as the legislative session was drawing to a close, it was rolled up with numerous other bills into an Omnibus Bill (requires only one vote from each legislator present). The Chapter updated our original letter of support and sent it to several key Congressional leaders urging action on the bill. Unfortunately, the other bills it was packaged with didn't have the Congressional support the Omnibus needed to pass so the 2010 session ended with the NFHCA still not passed into law. It may, however, be brought up again during the 2011 session and we may need again to mobilize a support campaign.

Back in October, our new Legislative Liaison, Sue Marshall, queried several key State legislators and aides about attending a Chapter-sponsored science and policy workshop in the winter just before the start of the 2011 legislative session. The goal of the workshop would be to bring new and emerging science understandings to the attention of legislators while addressing key science issues important to them. While there was interest among those queried in attending a workshop like this, the general agreement was that it would be better attended if it were to occur after the upcoming session. So we're now targeting a Fall 2011 workshop. If you're interested in helping organize this short, half-day workshop, let's start a discussion (see contact info below). We'd love to have your help.

Speaking of our new Legislative Liaison, as 2011 dawns, our State Capital is again bustling with the activity of a new legislative session. At the Chapter's request – and based on 1) legislative topics the Chapter has been involved with over the last several years and 2) bills likely to be introduced during the 2011 session – Sue Marshall put together a list of “hot topics” our Chapter may want to pursue in 2011. Topics include natural resource agency budget cuts or consolidation, water quality (e.g., copper in brake pads, suction dredge mining, mercury in batteries and light bulbs), invasive species (via felt-soled wading shoes/boots, ballast water, firewood), conservation and land use (e.g., marine reserves, nearshore strategic plan, development within the urban growth boundary, etc.), and enforcement/wildlife penalties. In the coming weeks, the Chapter's Legislative and Executive Committees will be winnowing the list down to the 3-5 most relevant topics. If there are topics you think the Chapter should weigh in on during the coming year, please don't hesitate to contact me. Let your voice be heard.

We've been fortunate to have such a wonderful webmaster in Kara Anlauf for the last few years. Given it's a volunteer labor of love and she already puts a good deal of time into keeping the content on our website up-to-date, there's only so much time we can ask her to put into redesigning the look of the web site. So last year, after a false start with a web design community college class that was willing to help the Chapter update our web site, I've had some promising conversations with a Corvallis-based company (ProWorks) that is interested in providing some pro bono work to help nonprofits update their web sites. The best part is that Kara will still be able to be our webmaster and update the site's content as needed. ProWorks would like to include two or three other nonprofits and have the public vote to determine which one they would redesign. They anticipate rolling out the new website for the nonprofit with the most public votes by March. If this comes of fruition, you'll be seeing an email from me (via the listserve) – a grassroots campaign of sorts – requesting you visit a website and vote to have our website redesigned. Stay tuned...

Finally, at our Chapter's upcoming annual meeting, be sure to stop by the External Committee breakout sessions right after the business meeting. They are a great way to see what the Chapter is doing, meet other folks with similar interests, and ease your way into increased participation in Chapter activities. The committees are always looking for fresh faces and ideas and we'd love to have your help. After all, our Chapter is effective and functions solely as a result of volunteer efforts such as your own. Won't you join us in helping us fight the good fight?! I await your email or phone call...

Jeremiah Osborne-Gowey, External Director
(541-757-0687 ext. 3; ExternalDirector@orafs.org)

YOUR CHAPTER AT WORK!

HIGHLIGHTS OF THE SALMON IN THE CITY SYMPOSIUM

SPONSORED BY ORAFS IN THE CITY OF PORTLAND, OCTOBER 14, 2010

The AFS Oregon Chapter sponsored a Salmon in the City symposium at Portland State University's University Place Conference Center in Portland, Oregon on October 14, 2010. The symposium was a valuable and timely forum about research and issues surrounding urbanization and salmonids. Invited speakers presented a range of topics identifying the effects of urbanization on salmon and recommendations for additional research and changes in current policies.

A partial list of speakers that participated in the symposium include: (1) Dr. Derek Booth, President of Stillwater Sciences, Affiliate Professor at the University of Washington and coauthor of the National Research Council's report on NPDES stormwater permits, "Urban Stormwater Management in the United States" (National Academies Press, 2009); (2) Dr. Nat Scholz, leader of the Ecotoxicology group at NOAA's Northwest Fisheries Science Center in Seattle; (3) Dr. Alan Yeakley, Professor of Environmental Science at Portland State University and a member of the Governor's Independent Multidisciplinary Science Team (IMST) addressing Urban Land Use Effects on Salmonids in Oregon; (4) Dr. Carl Schreck, Professor with the Department of Fisheries and Wildlife at OSU who is serving his second four year term as a member of the Independent Multidisciplinary Science Team (IMST); (5) Ben Meyer, Chief of the Willamette River Habitat Branch with the National Marine Fisheries Service; (6) Mark Celedonia and Roger Tabor, fish biologists with the U.S. Fish and Wildlife Service out of the Washington Fish and Wildlife Office in Lacey Washington, and (7) Tom Friesen, manager of ODFW's Willamette Basin Research, Monitoring, and Evaluation Program in Corvallis, Oregon.

Highlights of some of the presentations include:

The National Research Council's report on NPDES stormwater permits, "Urban Stormwater Management in the United States" (National Academies Press, 2009). The report's analysis has implications for the Northwest because NPDES stormwater permits are one of the few regulatory vehicles for reducing the impacts of human settlements on salmonids. In other words as Dr. Booth

suggested, if this mechanism doesn't work, the NRC sees few regulatory alternatives that do.

Endocrine Disrupting Substances (EDCs)

EDCs are finding their way into urban watersheds from compacted surfaces, household sewage, landfill leachate, direct application to the landscape, and industrial effluents. Less obvious but very extensive are volatile compounds finding their way into the atmosphere with far distant effects. Studies are suggesting that the urban footprint may also have a profound impact on salmonids even in distant, pristine locations such as high elevation lakes in National Parks.

Independent Multidisciplinary Science Team's analysis of "Urban and Rural-residential Land Use Effects on Salmonids in Oregon" – (The report will be released in the early January 2011 and can be found on the IMST website: <http://www.fsl.orst.edu/imst>).

A short list of research recommendations identified by the IMST are listed below:

- Assess the capacity of Oregon streams within urban growth boundaries to produce salmonids
- Assess the affect of urban rehabilitation projects in Oregon on salmonids, aquatic assemblages and habitat
- Assess the ecological and economic benefits that could likely result from rehabilitation efforts toward recovering salmonids in developed/developing areas
- Develop predictions of large scale, long-term changes (for example, 50 – 100 year growth projections and expected affects on aquatic resources and salmonids)

Speaker power points can be found on the City of Portland's FTP site at <ftp://ftp02.portlandoregon.gov/> (To access, open the site in Windows Explorer, click on the BES folder and look for the folder titled "Salmon in the City_Oct 14 2010").

Contributed by Mike Reed, City of Portland

ORAFS EXHIBITS AT OWEB CONFERENCE

The Oregon Chapter participated in the Oregon Watershed Enhancement Board's Nov 15-17 Biennial Conference in Pendleton. We tried something new by setting up an exhibit of AFS products, information, and membership benefits. It turned out to be a successful endeavor for both outreach and recruiting.

Among the 300 participants, Colleen Fagan and Rich Grost manned the ORAFS exhibit and spoke with many members, potential new members, and more than a few past members overdue to renew. There was plenty of interest among volunteers and restoration workers in the informational we brought -- virtually all of the Fisheries magazines, journals, and special ORAFS symposia proceedings were placed into good hands, where they will get used for education and restoration projects. We also found good educational homes for all of the "Stream Continuum" posters on hand. Our sign-up sheet expanded our listserve by twenty folks, including staff from OWEB, various agencies, and several watershed councils.

We of course took every opportunity to generate interest in our own ORAFS Annual Meeting and Trade Show, especially among the many statewide vendors present. Participating as an exhibitor in the OWEB Conference gave us insights and energy to carry into our own trade show in Bend, to maximize cost-effective opportunities for exhibitors *and* members. See you there,

Rich Grost, Past President

WHERE DO YOU SERVE?

ATTENTION OREGON AFS MEMBERS!

Do you currently serve on a **natural resource-related advisory committee or task force – State, Federal or otherwise?** We'd love to know about it so the Chapter is better primed to respond to issues that crop up. If you serve on a committee, please send a brief email with the committee particulars and your contact information to the Oregon AFS External Director – Jeremiah Osborne-Gowey – at ExternalDirector@orafs.org.

THE STEVEN BERKELEY MARINE CONSERVATION FELLOWSHIP

This fellowship was created by AFS in 2007 to honor the memory of Steven Berkeley, a dedicated fisheries scientist with a passionate interest in integrating the fields of marine ecology, conservation biology, and fisheries science to improve fisheries management. Berkeley was a long-time member of AFS and a member of the first Board of Directors of the Fisheries Conservation Foundation. The fellowship comprises a competitively based \$10,000 award to a graduate student actively engaged in thesis research relevant to marine conservation. Research topics may address any aspect of conservation; a focus on fisheries issues is not required.

For more information and application requirements see: http://fishweb.ifas.ufl.edu/mfs/index_files/Berkeley_Fellowship.htm

Send electronic applications and recommendations, to be received no later than **February 1, 2011** to: Howard Williams, hwilliams@fisheries.org

CAST YOUR VOTE FOR THE EXCOM 2011 CANDIDATES! VOTE AT THE ANNUAL BUSINESS MEETING, FEB 24, 2011



President-elect, Jeff Yanke

Hailing from the great state of Wisconsin (how 'bout dem Packers, 'ey?), I got my undergraduate education at the University of Wisconsin – La Crosse. I cut my teeth in fisheries and aquatic science waist-deep in the muddy Mississippi River backwaters working for several state and federal agencies. After zebra mussels and flying carp nuked the river, and needing more “topological enhancement” in my life, I set out west after clear rivers and wild trout (after washing my waders *very* carefully – I promise). Shortly thereafter, I found myself doing fish surveys in the upper Salmon River for Idaho Fish and Game and haven't left the Snake basin since. I attended the University of Idaho for a master's degree in fishery science, and migrated to Oregon after. I started with ODFW as a research biologist, served a brief tour as a fish management biologist in the Crooked River basin, and currently work as a district fish biologist in Oregon's Snake River country.



AFS has been a continuing presence throughout my career. I've been a member of the parent society since 1999, member of the Idaho state chapter since 2002, and currently a member of ORAFS since 2005. I played an active role for the Palouse student sub-unit as the education committee chair, hosted local free fishing days, and helped plan the infamous 'wild game feed' fundraisers. I currently serve on the education and outreach committee for ORAFS, and was involved in funding several education programs in Oregon through the ORAFS Education and Outreach Grant. Through my involvement, AFS has returned countless benefits including networking opportunities, increased awareness, and scholarship support. AFS made a notable difference in developing my career, and I'm ready to help continue that legacy.

The quality of a chapter is proportional to the passion and involvement of its membership, and ORAFS is no exception. Our annual meetings, public involvement, and resource advocacy (not to mention quality imbibements) have built ORAFS a nationally-recognized reputation.

We've accomplished all this thanks to a dedicated membership, and I look forward to making my contribution. We've been very fortunate to have exceptional folks serve on our EXCOM; and as president, I look forward to tapping into this wealth of enthusiasm and experience to help further our mission. I'm confident that my ability to work with people, organizational skills, and 'love of the game' will ensure that ORAFS continues to meet the needs of our membership, succeeds with challenges ahead, and represents the strength of Oregon's diverse resources.

President-elect, Todd Buchholz

I accept the nomination as candidate for your Chapter President-Elect. In doing so, I pondered how does someone such as me, who has been essentially a field going fish squeezer in the business for over thirty years, become a District Ranger on the Umatilla National Forest? Or, more to the point, why would I take such a seemingly radical career change after spending so much quality time converting gravel to concrete bottom raceways at Roaring River Hatchery in 1975, experience awesome sea sickness as an observer on Bulgarian trawlers, snorkel, e-shock and throw sticks and rock restoration projects into survey streams throughout the Alsea, Santiam, McKenzie, and Umpqua basins and basically have a great time splashing around in rivers and lakes, why give all that up for a “desk job”, and why take on the duties and responsibilities of your President.

The answer to the “why” is pretty simple and can be attributed to something Dr. Jim Hall said on the first day of Intro to Wildlife Management class, something along the lines of “wildlife management is really people management”. That simple statement struck me as pretty darn profound (of course I was young and easily impressed, no reflection on Dr. Hall). I figured out pretty darn quick that we can have the best science, the most cutting edge ecosystem management/watershed restoration plans, and the best trained and dedicated workforce in the world, and it will mean nothing if the



general public does not support our passion, our dedication, our work. So with that in mind, throughout my career I have looked for opportunities to educate, inform and include people about fish, the environment we both/all share and the impacts we have on each other. I found that I have a flair for bringing diverse people together, achieving consensus and doing good stuff. Whether its building partnerships to tear down an old mill dam in the middle of Sweet Home Oregon, so that listed salmon could once again reach miles of historic habitat, or making sure the implementers are part of the planning team, I believe that helping stakeholders find common ground and building community around that commonality is essential to insuring that our passion, dedication and work are not wasted.

I believe the Oregon Chapter of AFS has been a leader in creating community via best science based public education. As President, I would be an education advocate and support efforts to "get the word out" to folks, nourish existing partnerships, and foster efforts to reach urban audiences, to build a community in which all can appreciate the value of all living things and the world we inhabit.

Here's a brief resume: Member of AFS since I can't remember when, helped out on numerous annual meetings, donated wine and played mandolin with Ray Troll. Founding member of the North, South Santiam, and Calapooia Watershed Councils, member in good standing of the Partnership for Umpqua Rivers, committee member for the Umpqua Fishery Derby, Forest Service representative for the Oregon Coast coho salmon recovery plan, three Forest Fisheries lead for the Jordan Cove-Pacific Gas Connector pipeline FERC license project, ESA fisheries biologist, Umpqua National Forest, team member/writer editor Aquatic Restoration Biological Assessment (USFS, BLM, NMFS, USFWS and Coquille Tribe), project lead on numerous sticks and rocks in the stream projects, NMFS project lead, Habitat Conservation Plan, Headwaters Forest Agreement, El Presidente' National Federation of Federal Employees Local 2079, Sec/Tres NFFE Local 457, NFFE representative for two National reorganization efforts. And as of May 2010, District Ranger, Heppner Ranger District, Umatilla National Forest.

In closing, I can't write an AFS candidate bio without quoting Aldo Leopold, so here goes: "The last word in ignorance is the person who says of an animal or plant: 'What good is it?'. We who have chosen the professions

that are represented by the members of this Society have an obligation to enlighten, education and push back the ignorance that would cause someone to ask, "what good is it".

Vice-president, Bill Brignon

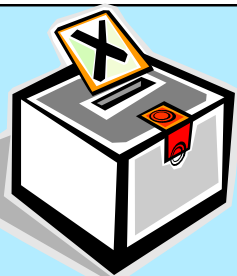
Greetings ORAFS members. I'm honored to have been nominated for Vice President and would like to solicit your vote. Over the past 10 years I've been involved in AFS as a meeting attendee, presenter, student volunteer, Session Convener, and Poster Chair. The time is right for me to step my game up and pursue a larger role.



I claim Illinois as my home state and moved to Oregon in 2003 with a BS in Fisheries and Aquatic Sciences from Purdue University...Go Boilers! After short stints with ODFW's Fish Stock Identification and Fish Health Service programs I accepted my current position with the USFWS's Columbia River Fisheries Program Office. In 2009, I received a MS from Oregon State University...Go Beavs! My first run at graduate school was a positive experience, or maybe I just have a high pain threshold; regardless, I'll be returning to OSU this year in pursuit of a PhD. My work with the USFWS and graduate studies are one in the same. I've been evaluating ecological interactions between hatchery and wild salmonids for the last 5 years and in starting a PhD program I'll be slightly shifting gears to study bull trout conservation.

So why should you vote Bill for VP? Well, my current status of part time fish biologist and part time graduate student gives me a unique perspective for this position, which oversees numerous student initiatives. Some of you will read this as meaning that I attack each of these responsibilities with part time effort. But the way I see it, I view ORAFS and the annual meeting experience from the eyes of both a professional *and* a student. Being elected to the office of VP will allow me to contribute to the mission of ORAFS from both perspectives. I appreciate your consideration. Vote for Bill.

Continued on pages 8 and 9



How do I vote for ExCom Officers?

Voting for your chapter ExCom officers will occur at the **Business Meeting** during the Annual Meeting in Bend on **Thursday, February 24 at 1:45PM**, following the **Awards Luncheon**.

External Director, Jeff McEnroe

I've been a member of the Oregon Chapter for the last ten years. Since that time I have attended almost all the annual meetings and several workshops. The annual meeting is the highlight of my year and I always look forward to the presentations, posters, and socials. Up until now that has been the extent of my involvement in the Oregon Chapter. I recently decided it was time to give what I could back to the organization. I have always been interested in the various issues related to fisheries management and the External Director seemed like a good fit.

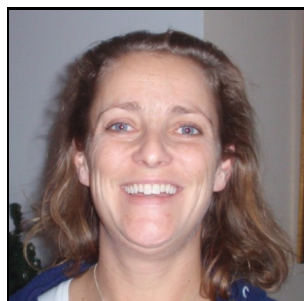


I received a bachelor's degree in Fisheries Science from Oregon State University in 2000 and was lucky enough to be accepted as a graduate student at OSU the next fall. I received my Masters degree in Fisheries Science in 2004 working with Dr. Stan Gregory studying juvenile salmonid passage through culverts. For the last four years I have been employed as a fish biologist with the Roseburg Bureau of Land Management. A good portion of my job involves planning and implementing large-scale instream restoration projects, along with intensive effectiveness monitoring programs. These large scale projects involve multiple partners and lots of moving parts. Communication and leadership are critical skills necessary to make these projects successful. Public education and outreach are also strong components to my job which require strong communication skills. I am also active with fisheries issues outside the BLM as a member of the Jefferson Fish Society, Umpqua Fishery Enhancement Derby, and the Partnership for the Umpqua Rivers.

Thank you for considering me for the position of External Director. I can't wait to give back to the organization that has given me so much over the last decade.

External Director, Shivonne Nesbit

Hello ORAFS! Thank you for the External Director (ED) nomination. Having served as your Vice President for the last two years, I think I am prepared and ready to step into a different role within the OR Chapter Executive Committee.



My involvement with AFS dates back to 2003 when I migrated from BC to Oregon. Over the last 7 years, I have been actively involved with the OR Chapter, and last year

I became involved with the Western Division and the AFS Parent Society through participation on the Planning Team for the 2011 national meeting in Seattle and as a mentee with the Parent Society governing board. For the Seattle meeting, I am chairing the Information Systems Committee (AV/telecommunications) which has been (and will continue to be!) a tremendous learning experience. Working in tandem with the Planning Team and Parent Society has opened my eyes to all of the details and logistics of planning a national meeting. If you want to get involved—drop me an email! When the OR Chapter next hosts a division meeting, I will be well-prepared to assist with the planning & hosting.

Also in 2010, I was nominated by the OR Chapter and Western Division to be apart of a mentor/mentee program with the Parent Society governing board. Through my involvement I hear about all of the opportunities and on goings of AFS throughout the country. Our national external committees operate similarly to our chapter committees so if chosen to serve as the OR Chapter ED, my involvement will allow for an exchange of information between the parent society committees and the chapter.

In addition to my involvement with AFS, I think I am a worthy candidate for several other reasons. First, I have had the pleasure of working with Jeremiah Osborne-Gowey for the last two years and I have a good understanding of what the job entails. ED is a demanding position and involves a lot of communication and fast action on part of the ED and committee members. We are considered to be one of the most active chapters in the country and much of this recognition is based on the work of our external committees. If I am elected as to serve as your ED, I will work closely with each of the committees to ensure engagement of our membership and active participation from all of our committees to discuss and act on emerging fisheries issues and opportunities. Secondly, I think my current jobs make me a good fit for ED. In my dual roles with ODFW as the ESA state coordinator and USFWS as a fisheries biologist, I am working with biologists from every agency throughout the state. I think my contacts and networking abilities will be valuable for increasing membership participation and for keeping up with opportunities. Lastly, I am passionate and dedicated to AFS. I will work hard as your ED and will do everything I can to maintain and increased membership involvement in our external committees.

Thanks for your consideration! Being a part of the OR Chapter Ex Com for the last two years and representing the OR Chapter at the division and national level has been extremely rewarding. I look forward to seeing you in Bend in February.

Continued on page 9

Secretary/Treasurer, Michele Weaver

At my first Oregon Chapter AFS meeting in 2002 I quickly learned that the more involved you become, the more rewarding the experience will be. That continues to hold true and is one of the primary reasons I am volunteering to serve a second term as Secretary/Treasurer.



After graduating from the University of Connecticut in 1995 with a degree in Ecology and Evolutionary Biology, I learned that people would actually pay you to study fish. I started my fisheries career with the Connecticut Department of Environmental Protection then migrated west in 1997 and found employment with the Oregon Department of Fish and Wildlife. I have worked on many different projects within ODFW's Columbia River Investigations Program over the past 13 years and am grateful for the experiences I have gained.

I am member of AFS and have been involved in various capacities including multiple poster presentations and talks, the raffle/auction chair in 2007 and 2008, the poster session chair in 2009, and holding the office of Secretary/Treasurer in 2010. I feel the experiences I have had with AFS are invaluable and would like the opportunity to continue my involvement. I have learned a tremendous amount during my first term as Secretary/Treasurer and am excited to put that knowledge to work. I believe I have demonstrated during the past term that I have the skills and abilities needed to perform the duties of this position and would very much appreciate your vote of confidence in electing me to serve as Secretary-Treasurer for a second term.

Internal Director, Jason Kent

I'm Jason Kent, the current Internal Director for ORAFS. I've served in this role since March 2010, and I'm currently working with the RiverHouse in Bend for the 2011 Annual Meeting arrangements. Before I became Internal Director, I was the Education & Outreach Chair for ORAFS and led the effort to award \$20,000 over two years for the Education & Outreach Grant. The E&O Committee developed two RFPs and selection criteria, reviewed and scored each of the 40 grant applications, compiled the scores, and recommended grant recipients to ExCom. Three of the grant recipients will give presentations at the 2011 Annual Meeting on their projects. Prior to moving to Oregon about three years ago, I was the Hydrology/Water Quality Committee Chair for the Idaho Chapter of AFS.



I work for Tetra Tech, Inc. as a project manager and water resources/river restoration engineer in our Portland office. I received my Bachelor degree in Environmental Biology from Ohio University. After a couple of years working as a field technician and aquatic ecologist, I went back to school for a Master's degree in Water Resources Engineering from Colorado State. I prepared my Master's thesis on a Chinook salmon production model of the reach of the Sacramento River between Keswick Dam and Red Bluff, CA. While I was at CSU, I worked for the USGS Biological Resources Division in the Instream Flow Group, and specialized in instream flow data collection and analysis. I have spent much of my career crossing back and forth between the line that separates biology and engineering, particularly in the fields of instream flow, stream restoration, and fish passage.

DO YOU HAVE A STORY TO SHARE?

- Have you started or finished a **unique restoration project**?
- Have you recently begun or completed an **interesting research project**?
- Would the OR AFS membership benefit from hearing about your **recent experiences** or **lessons learned**?

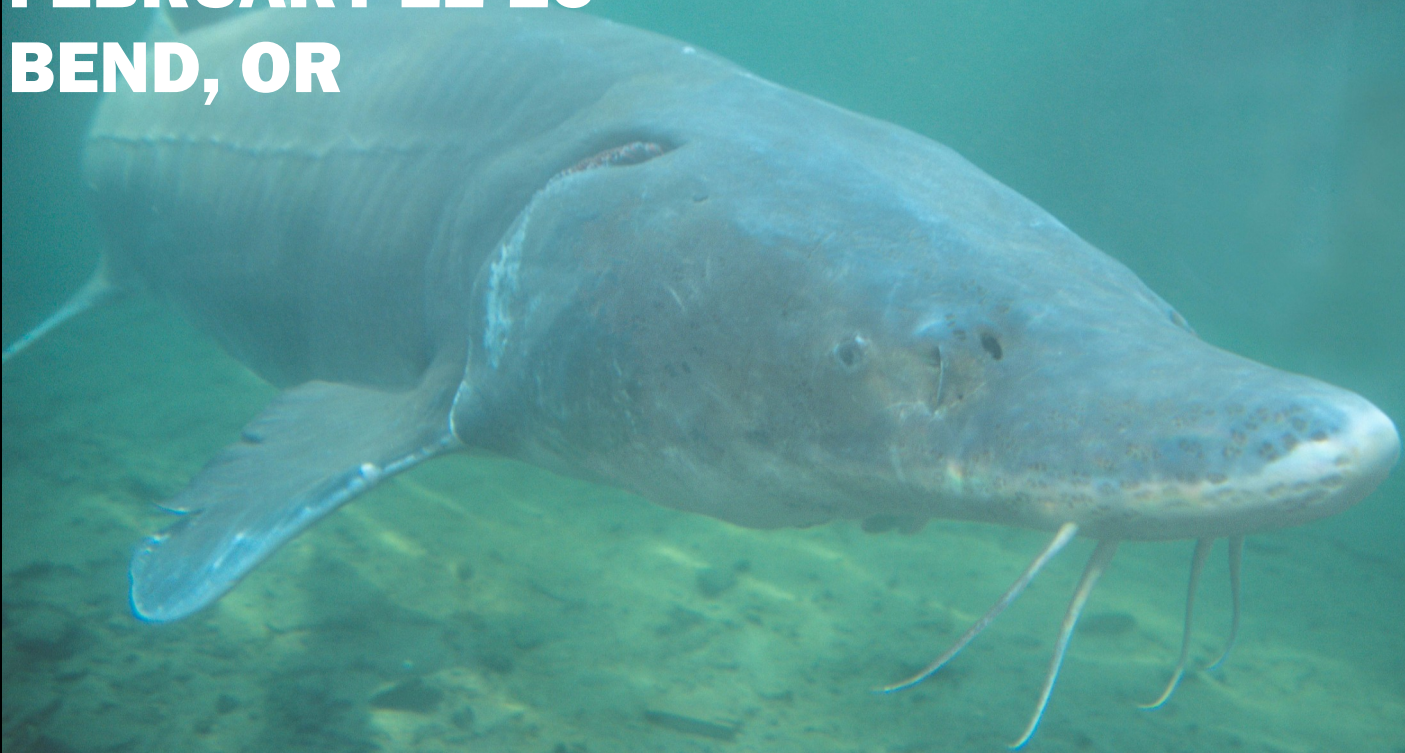
If you answered "Yes", then submit your story as one of our two member-driven features!

- 1) **Fishery Features**: summaries that include text and/or photos and are up to 2 pages in length.
- 2) **Field Notes**: can be as short as a photo with a caption or as long as a paragraph or two!

OR AFS 2011 ANNUAL MEETING

FEBRUARY 22-25

BEND, OR



HERMAN THE WHITE STURGEON (*ACIPENSER TRANSMONTANUS*) POSES DURING A LAP PAST THE VIEWING WINDOW AT ODFW'S BONNEVILLE FISH HATCHERY.

Photo © www.RichardGrost.com

Our 2011 Annual Meeting will focus on **Managing Through Science Not Emotion**. The meeting will include a wide variety of opportunities for sharing technical expertise, ideas, results of cutting edge research, and of course our trademark abundant networking opportunities. It will include a plenary speaker with 55 years of fisheries experience, relevant technical sessions, poster displays, educational workshops, trade show vendors, a student-mentor mixer, and several social events — highlighted further within these pages. We are providing these events and services at the lowest possible cost, to maximize participation despite the economic challenges we are all facing.

Deadline January 21 for:

- *Registration discount rates*
- *Program content from Vendors and Sponsors*
- *Riverhouse hotel room discounts: 1-800-452-6878 and specify "American Fisheries Society"*

Register before January 21!

at:
www.orafs.org

- Early registration fees for AFS members / non-members are \$135 / 185
- (\$100 / 125 for retirees).
- Early registration for students is only \$25.
- Banquet meals are priced at \$35, same as last year.
- **Early registration saves most members \$25-50 in late fees through 1/21/11**

Student-Mentor Mixer

Sign up for this interesting event when you register online. We typically get about 100 participants and match up mentors and students in a speed-dating format. Contact Shivonne Nesbit at:

VicePresident@orafs.org, 541-947-6253.

2011 OREGON CHAPTER ANNUAL MEETING: OVERVIEW & EVENTS AT A GLANCE

JOIN US FOR MANAGING THROUGH SCIENCE IN BEND, FEB. 22-25, 2011

Feb 22 Tuesday	Feb 23 Wednesday	Feb 24 Thursday	Feb 25 Friday
<ul style="list-style-type: none"> • Workshops (pg 13) <ul style="list-style-type: none"> • Workshops (pg 13) • Plenary Session (pg 12) • Technical Sessions (pg 16) • Poster Session & Trade Show Social (below & pg 17) • Student Mentor Mixer (below) 	<ul style="list-style-type: none"> • Technical Sessions (pg 16) • Awards Luncheon (below & pg 19) • Business Meeting (pg 7) • ODFW/OSU Sponsored Mixer (below) • Banquet (below) • Raffle & Auction (pg 18) 	<ul style="list-style-type: none"> • Technical Sessions (pg 16) • Tour of Round Butte Dam Fish Passage facilities (pg 17) 	

THEME:

Our 2011 Annual Meeting will focus on **managing through science not emotion**. The meeting will include a wide variety of opportunities for sharing technical expertise, ideas, results of cutting edge research, and of course our trademark abundant networking opportunities. It will include a plenary speaker with 55 years of fisheries experience, relevant technical sessions, poster displays, educational workshops, trade show vendors, a student-mentor mixer, and several social events. We will provide these events and services at the lowest possible cost, to maximize participation despite the economic challenges we are all facing.

GET INVOLVED!

Your suggestions and assistance are welcome and encouraged. Please contact Program Chair Colleen Fagan (PresidentElect@orafs.org or 541-962-1835) for more information.

PLENARY SESSION (FEB 23):

Our plenary session will be Wednesday afternoon and include a speaker of regional renown, Don Chapman. Don Chapman's fisheries career covered 55 years, most of it spent on salmon and steelhead. Don received a PhD from Oregon State University and taught at the University of Idaho, Oregon State University, and other universities. He has taught many of the salmon managers working in the Northwest. Don has worked throughout the Pacific Northwest, extensively on Columbia and Snake River issues. His plenary presentation will focus on Columbia and Snake River salmon and steelhead issues.

POSTER SESSION AND TRADE SHOW SOCIAL (FEB 23):

Visit local and nationally-recognized vendors of fishery equipment and services face-to-face during the poster session. The trade show will be accompanied by a social to facilitate interaction. Vendors: see information on page 17 to register for space.

STUDENT MENTOR MIXER (FEB 23):

The 'speed-dating' format will be continued to allow more interaction and networking among students & professionals.

AWARDS LUNCHEON (FEB 24):

Network over **free lunch**, while recognizing the award-winning work of our colleagues. Members: see instructions on page 19 to nominate a colleague for an award!

ODFW/OSU SPONSORED MIXER (FEB 24):

ODFW and OSU are sponsoring a mixer for all meeting attendees from 5:00-6:00 PM.

RAFFLE AND AUCTION (FEB 24):

Score some great deals on equipment, artwork, and adventures while supporting the chapter. Donations gratefully accepted.

ENTERTAINMENT:

Local band "The Reputations" will provide plenty of dancing and entertaining music following the banquet.

Talented members are encouraged to bring their instruments for acoustic jamming following the poster session.

STUDENT OPPORTUNITIES

Participation of college students from throughout Oregon is encouraged. There will be ample opportunities for students to present papers, display posters, compete for awards, meet mentors, and network with other students and professionals. Students can also defray costs by volunteering assistance to the ORAFS in trade for free lodging. Visit www.orafs.org for information about volunteering in exchange for lodging.

REGISTRATION

Early registration fees for AFS members / non-members are \$135 / 185, (\$100 / 125 for retirees). Early registration for students is only \$25. Early registration saves \$25-50 thru 1/21/11. Banquet meals are priced at \$35, same as

2011 OREGON CHAPTER ANNUAL MEETING: PLENARY SPEAKER: DR. DON CHAPMAN



We are pleased to announce that **Dr. Don Chapman**, the “guru” of salmon science in the Pacific Northwest and one of Oregon and Idaho’s most renowned fish biologists, has agreed to present the **Keynote Address** at our Plenary Session in Bend on February 23rd. Dr. Don Chapman’s fisheries career spanned 55 years which included leading regional and international fisheries conservation efforts. Most of his career was spent working on salmon and steelhead throughout the Pacific Northwest. At the Annual Meeting, Dr. Chapman will be presenting “Perspectives from the Idaho High Country”, focusing on Columbia and Snake River salmon and steelhead issues.

Dr. Chapman attended Oregon State University, where he received his B.S. in Forest Management, and M.S.

and PhD degrees in Fisheries. Following graduation, Dr. Chapman taught biometry and ecology at Oregon State University (1959-1964) and became the leader of the Idaho Cooperative Research Unit and a professor of fishery resources at the University of Idaho (1964 to 1972). His principal emphasis was salmon and steelhead ecology in fresh water, mostly in the Salmon and Clearwater rivers. Dr. Chapman also managed to mix in being a visiting Associate Professor of Limnology at the University of Wisconsin and a Visiting Professor at Montana State University. From 1984–1997, he served as an Adjunct Professor at Idaho State University. Many of Dr. Chapman’s students went on to influential jobs researching and managing salmon and steelhead in Oregon and throughout the Northwest.

In Oregon, Dr. Chapman worked as the coordinating biologist for the Governor’s Committee on Natural Resources. He also was the director of research for the Oregon Fish Commission, executive secretary of the Oregon State Water Resources Research Institute and coordinator of the Alsea Watershed Study. In these positions, Dr. Chapman supervised the research and management work of biologists charged with marine and freshwater food fish management, with emphasis on Columbia River anadromous stocks, and coordinated and engaged in several research activities on effects of timber harvest on stream ecology. During his 55 year career, Dr. Chapman served on two committees on Columbia River anadromous fish for the National Research Council and the National Academies of Science.

Dr. Chapman’s international career experiences included work for the United Nations Food and Agricultural Organization in Cartagena, Colombia and Kigoma, Tanzania, both of which involved helping native people to develop sustainable fisheries. Following his international work in Colombia and Tanzania, Dr. Chapman opened and ran a consulting firm for 20 years, and became a fisheries consultant for the Northwest electric power utilities. Chapman spent a substantial part of his career as a consultant for utilities and defending the Columbia River basin hydroelectric industry. He was one of the most prominent opponents to breaching the four lower Snake dams and one of the staunchest supporters of the current fish bypass and collection systems at the dams. He faced off against many of his former students in court, believing and testifying that it was not necessary to breach Snake River dams to save threatened and endangered salmon runs. But global warming and resultant rising river and ocean temperatures and shrinking ice caps have changed his mind. In 2005, Dr. Chapman citing new scientific evidence on the warming of the Columbia River and North Pacific went on record as supporting breaching of the four lower Snake River Dams as the only way to prevent these fish from going extinct. Doing so will cool temperatures in the Snake and Columbia rivers, reduce travel time for fish, increase spawning habitat for fall Chinook salmon and eliminate a major source of adult and juvenile fish mortality.

For Dr. Chapman, science is not about accepting the majority opinion, rather defending hypotheses with data not emotion. He has researched, published, consulted, and worked in many coastal and inland streams in the Pacific Northwest. He has authored more than 100 reports, many published in peer-reviewed journals and books. Because of his extensive work on and commitment to anadromous species and their habitat, Dr. Chapman, has been recognized with the Award of Excellence from the Idaho Chapter of the American Fisheries Society and the “Most Significant Paper” in the Transactions of the American Fisheries Society in three volume years (1965, 1976, and 1988). We are excited to kick off the Annual Meeting with a plenary talk that is sure to inform and inspire!

2011 OREGON CHAPTER ANNUAL MEETING: ATTEND A WORKSHOP

Instream Flow and Fish Habitat: A Condensed Workshop for Today's Busy Fish-Head

When: Feb 22, 1:00–5:00 pm and Feb 23, 8:00–11:30 am

Where: The Riverhouse, Bend and nearby field location

Cost: \$125/\$175*, students \$25 prior to January 21, 2011

Instructor: Tim Hardin (Tim.S.Hardin@state.or.us)

Chances are, the fishes you deal with in your profession live in water. If that water is moving, then this course may be for you! Instream flow issues loom large in hydropower projects, diversions for agricultural or municipal uses, aquifer storage and recovery, Biological Opinions, and just about anytime humans interact with running waters. Here is your chance to learn enough to be dangerous in one very short workshop.

This workshop will cover:

- **Hydrological statistics:** learn to throw around terms like “flow exceedance curve”, “time series analysis”, and, possibly, “Markov chain.”
- **Hydraulics:** demystify the basic terms that go into the fanciest models.
- **Instream flow methods:** Learn the basics, from Tennant to Tessman to Toe-width, from IHA to PHABSIM to River2D. Learn the basics of data interpretation and project scoping too, all in a few short hours. Impossible? No, it can be done, depending, of course, on how “the basics” are defined.

The class will use a combination of presentations, exercises, group discussions, and caffeine to drive the points home, and, in some cases, into the ground. At press time, the possibilities of guest speakers and/or a field exercise were still being negotiated.

Fishery Photography

When: Feb 22, 1:00–5:00 pm and Feb 23, 8:00–11:30 am

Where: The Riverhouse, Bend

Cost: \$125/175* (students \$25 prior to January 21, 2011)

Conveners: and Jeremy Monroe (Jeremy@freshwatersillustrated.org) and Rich Grost (rgrost@richardgrost.com)

Underwater photography and videography is increasingly important for documenting fish and habitat characteristics, educating and compelling the public to use and respect the resource, and justifying project funding. In recent years, a new generation of over-the-counter underwater digital camera equipment has evolved, which offers new opportunities for meeting the age-old challenges of making good images in the field, and makes underwater photography a viable method for virtually every biologist who can fall into a stream.

This workshop will cover:

- Selection of equipment (new point-n-shoot cameras, hand-held and remote video cameras, accessories)
- Set-up and use of most equipment (e.g. how to control flash and macro functions)
- Professional tips for improving all of your photography
- Field methods for special types of images (underwater, macro, flash, etc.)

It will also include group critique of an image, approach, or challenge from each participant, and plenty of interactive Q & A. This is a hands-on workshop so bring your camera if you wish, and your experiences and image(s) to share. At the conclusion, you'll have valuable insights on how to stretch your limited photography budget, and how to make the most of your time and opportunities in the field and underwater. Why spend years and thousands of \$ making your own mistakes when you can learn from ours instead -- at a bargain price?

*Cost for non-AFS members

2011 OREGON CHAPTER ANNUAL MEETING: REGISTER TODAY!!!

REGISTER BEFORE JANUARY 21 TO AVOID ANY LATE FEES.



Early registration for the 2011 ORAFS Annual Meeting is available online now. Early general registration fees are \$135 for members, \$185 for non-members, \$25 for students, \$100 for retired members and \$125 for retired non-members. The General Registration fee includes access to all technical sessions and social events including the poster and tradeshow social, the awards lunch (don't forget to select your meal option when you register), the raffle and auction, the ODFW/OSU sponsored social, and more. The banquet dinner is \$35 and Texas-Hold'em is \$25.

123 SIGNUP

Click here (<https://www.123signup.com/register?id=vgbpt>) for additional information and register soon. You can visit our website, www.orafs.org for the latest information and to access the registration form. If, after checking the website, you have any 2011 Annual Meeting registration questions, please contact Michele Weaver at sectreasurer@orafs.com, 971-673-6062.

SEEKING SPONSORS

FOR THE ANNUAL MEETING

Sponsorships from agencies, industries, tribal and other entities constitute a large and important part of the Chapter's support. Contributions of in-kind services (e.g. printing services) and direct funding help to defray meeting costs, thus allowing low registration fees to ensure maximum participation by fishery professionals. They also help support our student programs such as: up to \$13,000 in annual scholarships, student-mentor social event, and student registration discounts and complimentary lodging.

Sponsorships generally range from \$500 to \$5,000 each, and are recognized in print within our meeting program, on posters at the meeting registration desk, and on our website. Please consider arranging a sponsorship from your organization, or naming the ORAFS as a recipient in your non-profit community giving campaigns or matching donation programs.

The Oregon Chapter of the American Fisheries Society annual meeting is the premier venue for sharing and communicating fisheries science and management information among professionals in Oregon, and beyond. Our annual meeting typically hosts more than 400 professionals and offers more than 150 technical presentations, plus many networking and mentoring opportunities. Registration fees are kept low to facilitate participation among students, technicians, and scientists from all employment levels.

To be recognized in print, sponsorships
must be received by
January 21, 2011

To become a Sponsor of the 2011 Annual Meeting, please
contact: [Demian Ebert, President@orafs.org](mailto:Demian.Ebert@orafs.org).

WHERE TO STAY?

LODGING DETAILS FOR ANNUAL MEETING

THE RIVERHOUSE; 800-547-3928

ORAFS has reserved a block of rooms at the Riverhouse with a special rate (\$88 single or double) within government per diem limits. **The block of rooms & special rate are available now, and will be held through January 21, 2011, or until sold out.** After this date, any remaining rooms will be opened to the general public, and the Riverhouse cannot guarantee that the special rate can be granted.

To reserve a room at the Riverhouse, call the reservations line at (800) 547-3928 or the direct number at (541) 389-3111. **Rooms at the AFS rate cannot be booked online.** Reference the group block for the Oregon Chapter AFS. There are multiple room types available within the AFS block. The Riverhouse cancellation policy is that any reservation cancelled within 14 days of arrival will be assessed a fee equal to one night hotel room plus taxes.

The Riverhouse is located on the north end of Bend, at 3075 N. Business 97, Bend, OR 97701. Their website is www.riverhouse.com/

If the room block at the Riverhouse is sold out, the overflow hotel is the Shilo Inn. It is located next door to the Riverhouse & should be able to accommodate government per diem rates if you call their front desk (phone #: (541) 389-9600) and reference the AFS meeting.

2011 OREGON CHAPTER ANNUAL MEETING: SCHEDULE-AT-A-GLANCE

Date/Time	Event
Tuesday, February 22	
11:00 a.m. – 5:00 p.m.	Tradeshow Display Set-up
11:00 a.m. – 5:00 p.m.	Registration / Information
1:00 p.m. – 5:30 p.m.	Workshops (2)
3:00 p.m.- 3:20 p.m.	Coffee and Refreshment Service
Wednesday, February 23	
7:00 a.m. – 6:30 p.m.	Registration / Information / Sales Desk Open
7:00 a.m. – Noon	Coffee and Refreshment Service
8:00 a.m. – 11:30 a.m.	Workshops (2)
8:00 a.m. – 2:30 p.m.	Tradeshow Display Set-up
Noon – 7:30 p.m.	Poster Set-up
1:00 p.m. – 2:30 p.m.	Plenary, Keynote Presentation
2:30 p.m. – 3:00 p.m.	Break – Refreshments in Exhibit Hall
2:30 p.m. – Midnight	Tradeshow
3:00 p.m. – 5:00 p.m.	Concurrent Sessions (4)
6:00 p.m. – 7:30 p.m.	Student-Mentor Mixer
8:00 p.m. – Midnight	Poster Session and Tradeshow Social
10:00 p.m. – Midnight	Acoustic Jam Session
Thursday, February 24	
7:00 a.m. – 5:00 p.m.	Registration / Information / Sales Desk Open
7:30 a.m. – 8:00 a.m.	Coffee and Refreshment Service in Exhibit Hall
7:30 a.m. – 6:00 p.m.	Tradeshow
8:00 a.m. – 5:30 p.m.	Poster Session
8:00 a.m. – 10:00 a.m.	Concurrent Sessions (4)
10:00 a.m. – 10:20 a.m.	Break – Refreshments in Exhibit Hall
10:20 a.m. – Noon	Concurrent Sessions (4)
Noon – 1:45 p.m.	Awards Luncheon (no charge), Professional Awards, Scholarship Awards
1:45 p.m. – 2:30 p.m.	OR AFS Business Meeting
2:30 p.m. – 3:00 p.m.	OR AFS Committee Breakout Discussions
2:40 p.m. – 3:00 p.m.	Break – Refreshments in Exhibit Hall
3:00 p.m. – 5:00 p.m.	Concurrent Sessions (4)
5:00 p.m. – 6:00 p.m.	ODFW/OSU Sponsored Mixer
6:00 p.m. – 6:30 p.m.	Banquet Social
6:00 p.m. – 8:30 p.m.	Silent Auction
6:30 p.m. – 9:00 p.m.	Banquet, Awards, Oral Auction, Raffle
9:00 p.m. – 12:30 a.m.	Dancing with Music by The Reputations
9:00 p.m. – 12:30 a.m.	Texas Hold'em Fundraiser
Friday, February 25	
7:00 a.m. – Noon	Registration / Information / Sales Desk Open
7:30 a.m. – 8:00 a.m.	Coffee and Refreshment Service in Exhibit Hall
7:30 a.m. – 10:20 a.m.	Tradeshow
8:00 a.m. – 10:20 a.m.	Poster Session
9:00 a.m. – 10:00 a.m.	Concurrent Sessions (4)
10:00 a.m. – 10:20 a.m.	Break – Refreshments in Exhibit Hall
10:20 a.m. – Noon	Concurrent Sessions (4)
10:20 a.m. – Noon	Tradeshow and poster take-down
1:00 p.m. – 3:00 p.m.	Round Butte Dam fish passage tour (off-site)

2011 OREGON CHAPTER ANNUAL MEETING: TECHNICAL SESSION SCHEDULE

Start Time	Session Titles			
Wednesday, February 23				
1:00 p.m.	Plenary			
2:30 p.m.	Break			
3:00 – 5:00 p.m.	Marine Fisheries: Marine Reserves and More	The Good the Bad and The Beautiful: Native Trout, to Invasive Species, to Suckers and Sticklebacks	Fish Physiology	Factors Affecting Salmonid Survival at the smolt and adult life stages
6:00-7:30 p.m.	Student-Mentor Mixer			
8:00 p.m. –	Poster Session and Tradeshow Social			
10:00 p.m. -	Acoustic Jam Session			
Thursday, February 24				
8:00 a.m.	Marine Fisheries: Marine Harvest Issues	The Good the Bad and The Beautiful: Native Trout, to Invasive Species, to Suckers and Sticklebacks	The Latest on Lamprey	Salmonid Life History Investigations
10:00 a.m.	Break			
10:20 a.m.	Sweating the Small Stuff: Fish Passage Issues Under the Radar	Fish Health: Parasites and Viruses Oh My	Water Quality and Quantity, and Lamprey Leftovers	Aquatic Insects
Noon	Awards Luncheon (no charge) - Professional and Scholarship Awards			
1:45 p.m.	OR AFS Business Meeting			
2:30 p.m.	OR AFS Committee Breakout Discussions			
3:00 p.m.	Break			
3:20 p.m.	Sweating the Small Stuff: Fish Passage Issues Under the Radar	Changing the Culture of Fish Culture: What, Why, How	Supplementation Successes and Lessons	Salmonid Distribution and Abundance Estimation
5:00 p.m.	ODFW/OSU Sponsored Mixer			
6:00 – 6:30 p.m.	Banquet Social			
6:00 – 8:30 p.m.	Silent Auction			
6:30 – 9:00 p.m.	Banquet, Awards, Oral Auction, Raffle			
9:00 – 12:30 a.m.	Dancing with Music by The Reputations			
9:00 – 12:30 a.m.	Texas Hold'em Fundraiser			
Friday, February 25				
8:00 a.m.	Freeing Rivers: Dam Removal Considerations and Success Stories	Education and Outreach	Prioritizing Habitat Restoration Actions	Deschutes Basin Fish Reintroduction, Research and Restoration
10:00 a.m.	Break			
10:20 a.m.	Adult and Juvenile Salmonid Passage and Behavior at Dams		Implementing and Monitoring Habitat Restoration Actions	Deschutes Basin Fish Reintroduction, Research and Restoration

VENDORS: RESERVE BEFORE JANUARY 21!

2011 OREGON CHAPTER ANNUAL MEETING TRADE SHOW

The 2011 Annual Meeting will feature a Trade Show and ample space for vendor exhibits, each about 10x10 ft, arranged within the **Exhibit Hall** of the Conference Center, where **all coffee breaks** will be served. This room will also host the Poster Session and **Trade Show Social** Wednesday night, and the Awards Lunch and Business Meeting Thursday. You'll have excellent exposure to our 400+ audience, as well as drive-up access to the ground-floor room and opportunity to access the **Deschutes River** flowing only 150 ft away for **product field demonstrations**. Locations will be selected on a 1st-come basis at the meeting. Cost for the display space, 8-ft table, 2 chairs and waste-basket is \$300 for members and \$400 for non-members. Artists and non-profit groups may participate at a reduced cost of \$100. People manning the exhibit must also register for the meeting and meals using standard options.

Reserve your space by using the **online registration form** at: www.orafs.org – register as either a member or non-member, then add the “Vendor Exhibit” option on the form. Register before January 21 to be listed in the Annual Meeting Program. Questions? Contact: Rich Grost at PastPresident@orafs.org or 541-498-2617.

2011 OREGON CHAPTER ANNUAL MEETING: FIELD TRIP!

Tour of PGE's Round Butte Dam Fish Passage Facility

When: Feb 25 1:00 – 3:00 pm (No Cost)

Organizer: Don Ratliff

For more information and to sign up, contact Don via email: Donald.Ratliff@pgn.com. A sign-up sheet and directions to the site will also be available at the Annual Meeting Registration Desk.

Visit Round Butte Dam Friday and view the completed New Selective Water Withdrawal Tower and Downstream Fish Passage Facilities.



Portland General Electric and the Confederated Tribes of the Warm Springs Reservation of Oregon have been operating the new Selective Water Withdrawal (SWW) and associated Fish Transfer Facility (FTF) for approximately one year. The water intake structure screens approximately 6,000 cfs of surface water to exclude fish from the powerhouse flow while directing the fish to the capture facilities. All fish attempting to emigrate from Lake Billy Chinook are captured at the Round Butte Dam downstream FTF. The fish passage facilities are designed to capture fish according to size, biologically sample, recycle, and transport resident species and downstream migrating salmon and steelhead. Captured fish need to be sorted by size for safe handling, automatic release of sockeye/kokanee fry, and to reduce predation in the holding raceways. To facilitate automatic, in-line separation by size, a series of three separators using parallel bars of different diameter and spacing within the flow line were constructed. Fish Facility, Juvenile Collection, Downstream Transportation, and Release evaluation studies have been conducted to analyze fish capture and passage performance for naturally reared smolts and juvenile and adult resident fish captured and processed at the collection facilities. The performance of the fish collection and sampling facilities relative to the 93% safe passage standard established for naturally reared salmonids during the first five years of operation has also been evaluated. Smolt survival was estimated as 98.2% for Chinook salmon, 98.5%, for steelhead, and 97.7% for sockeye salmon.

SEEKING RAFFLE AND AUCTION DONATIONS!

The ORAFS counts on donations to, and proceeds from, the Raffle and Auction to help fund our scholarship programs and keep meeting fees low. For donors, it's a great way to advertise products and services to our large but targeted audience. Plus, it's a fun part of the Banquet. Some of the most popular items in past years have been fish art, prints, handmade items, guided fishing trips, outdoor gear, professional fisheries gear, books, and fine beverages. Please consider donating, or contacting your favorite local vendors to gather donations.

**SHOW OFF AND SHARE YOUR PRODUCTS, SERVICES,
EXPERIENCE, ART AND OTHER SKILLS**

To Donate or Assist, Contact:

Alison Dauble, Alison.D.Dauble@state.or.us, 541-867-0300 x 284
Brook Silver, brook_silver@fws.gov, 503-239-7378

ATTENTION STUDENTS: TRADE TIME FOR SPACE AT THE ORAFS ANNUAL MEETING

How would you like to earn free lodging at the Oregon Chapter of the American Fisheries Society Annual Meeting in Bend? We are looking for professional, trustworthy student workers to assist with a variety of logistical support tasks including:

- Audiovisual support (PowerPoint and lights) in speaker rooms
- Assembling and disseminating attendee packets prior to the meeting
- Providing directions and information to meeting attendees
- Assisting with the raffle and auction
- Setting-up and taking down poster boards and presentations
- Hawking T-shirts and other gear at the sales table

In addition to helping serve the noble cause of fisheries conservation, expanding your fisheries education, and networking and meeting interesting people, you will also be compensated with **complimentary group lodging** for your labor while you will still have plenty of time to attend technical presentations and enjoy social events!

To get on the list as a student volunteer, contact:
Shivonne Nesbit, ORAFS Vice President at:
VicePresident@orafs.org or (503) 947-6253

LAST CALL FOR AWARD NOMINATIONS

NOMINATE A DESERVING COLLEAGUE TODAY!



**NOMINATION FORM AT: WWW.ORAFS.ORG/AWARDS
DEADLINE: JANUARY 14, 2011**

The Chapter has hundreds of exceptional and dedicated professionals. Let's recognize at least a few of them every year with these award opportunities.

Full description of awards criteria and suggestions about how to write nominations are at: www.orafs.org/Awards. Submit nominations to Awards Chair, **Mindy Simmons**, at 503-808-4766, or mindy.m.simmons@usace.army.mil

DEADLINE FOR NOMINATIONS IS: Friday, January 14, 2011 at 5:00 PM

For all awards except Broken Oar, you should indicate how the nominee's efforts are above and beyond their regular job. All awards are discretionary, none are required to be given each year. All awards are limited to one recipient per year, except for Awards of Merit where multiple recipients may be rewarded within a year.

Fishery Worker of the Year

This is the Chapter's most prestigious individual award. Nominees **must be AFS members in good standing** who are responsible for substantial single or sustained accomplishments above and beyond their regular job, often spanning many years. Nominations should indicate how efforts are related to the goals of guiding and influencing sound resource practices.

Fishery Team of the Year

This award recognizes outstanding teams that merit acknowledgement for excellent work beyond an Award of Merit. The stringent award criteria are similar to the Fishery Worker of the Year, but for team efforts. This award recognizes the collaborative efforts to understand

and manage fisheries resources, and that these efforts frequently cross geographic, disciplinary and socioeconomic boundaries. At least one nominee of the team must be an **AFS member** in good standing. The team or group must have been responsible for substantial single or sustained accomplishments. Each member of the team nominated must have produced a substantial portion of the work. Nominations should indicate how they are related to the goals of guiding or influencing sound resource practices. To demonstrate equivalent contributions, describe substantive contributions of each member of the team.

Award of Merit

This award recognizes **individuals, groups, or organizations** that have made special contributions, above and beyond normal job requirements, to fisheries science or the American Fisheries Society over one or more years. Successful nominees display evidence of creativity, cooperation and results. Nominees do **not need to be AFS members**.

Bill Wingfield Memorial Award in Fish Culture

Nominees should be **individuals or groups** that have contributed significantly to advancing fish culture (including fish health) in Oregon. **AFS members or non-members** may be nominated.

Broken Oar Award

Everyone's favorite award, and just for fun, the Broken Oar Award is presented for "outstanding display of field technique and coordination." No doubt you already have some nominees in mind from this year's field season! **AFS members or non-members** may be nominated.

DO YOU HAVE A NEWS ITEM YOU WANT TO SHARE IN THE NEXT ISSUE OF THE PISCATORIAL PRESS?

Content deadline for the next issue is **March 15, 2011**. Send submissions to the Editor, Allison Evans at: allison.evans@oregonstate.edu